

**McCREARY COUNTY, KENTUCKY  
EMERGENCY OPERATIONS PLAN**



***PUBLIC HEALTH  
AND  
MEDICAL SERVICES***

***ESF-8***

*Coordinates and organizes public health and medical services resources in preparing for, responding to and recovering from emergency/disaster incidents which impact the citizens of McCreary County.*

**PUBLIC HEALTH AND MEDICAL SERVICES**  
**ESF-8**

**ESF Coordinator:** Support Services Supervisor, McCreary County Health Department / McCreary County Ambulance Service

**Primary Agency:** McCreary County Health Department  
McCreary County Ambulance Service

**Support Agencies:** **McCreary County Fiscal Court**  
McCreary County Judge Executive and Magistrates  
McCreary County Emergency Management Agency  
McCreary County Coroner's Office  
McCreary County Sheriff Department  
Whitley City Fire Protection District  
Eagle/Sawyer Fire Protection District  
West McCreary Fire Protection District  
South McCreary Fire Protection District  
North McCreary Fire Protection District

**Other Local Agencies**

McCreary County Health & Rehabilitation Center  
Cumberland Manor Rest Home  
McCreary County Public Schools  
Lake Cumberland Area Chapter of American Red Cross- Somerset  
606.678.436  
Adanta

**State Agencies**

Kentucky Division of Emergency Management  
Kentucky Community Crisis Response Board (KCCRB)  
Kentucky Public Health Department  
Kentucky Department for Community Based Services

### Scope

The purpose of Emergency Support Function 8 for McCreary County is to:

- Identify health and medical needs of the county before, during, and after a disaster;
- Coordinate the health and medical resources needed in the county to effectively respond to public health and medical care needs following a significant natural disaster or manmade events;

ESF-8/Public Health and Medical Services will coordinate personnel and resources to support preparation, mitigation, response and recovery in support of the primary emergency management objectives.

ESF-8/Public Health and Medical Services will coordinate-

- (1) Health care and mortuary activities;
- (2) Emergency care and treatment of casualties resulting from any type of incident;
- (3) Emergency public health services;
- (4) Preventative and treatment measures to offset biological; Chemical and radiological incidents or warfare;
- (5) Disposal of the dead;
- (6) Maintenance of sanitation services;
- (7) Mental health services, and
- (8) The prevention and mitigation of the spread of infectious disease.

### **Mission**

The mission of the Public Health and Medical Services Emergency Support Function is to coordinate and organize public health and medical services resources in preparing for, responding to and recovering from emergency/disaster incidents which impact the citizens of McCreary County.

ESF-8/Public Health and Medical Services is a functional annex to the McCreary County Kentucky Emergency Operations Plan (EOP) and, to the extent possible, information contained in other sections of the EOP will not be repeated in this ESF annex. Many of the agencies involved in ESF-8/Public Health and Medical Services activities have existing emergency plans and procedures which this ESF Annex is designed to complement and support.

This Emergency Support Function applies to all agencies with assigned ESF-8/Public Health and Medical Services emergency responsibilities as described in the McCreary County EOP.

### **Situations and Assumptions**

A well-planned health, behavioral health, medical, and mortuary support network is essential at anytime, but becomes vital during emergency situations. Situations and assumptions include-

- A large-scale incident may significantly increase demand for public health, behavioral health, medical, and mortuary requirements in McCreary County;
- Depending on the nature of the incident, complications may include general health and mental problems, traumatic injury, communicable disease, foodborne or waterborne illness;
- Residents or patients at health care facilities might be evacuated due to damage or the threat of damage from an incident;
- A disaster incident can give rise to secondary sources of injury and illness if proper precautionary steps are not taken in time;
- The number of isolation beds in the Commonwealth is not sufficient under normal conditions, and therefore will not suffice if there is a major disaster;
- The number of casualties and fatalities resulting from a major epidemic or incident might overwhelm medical and mortuary services. The facilities for caring for the dead and injured might also sustain physical damage. Emergency responders, medical and mortuary personnel might be among the casualties;
- Many injuries, both minor and relatively severe, will be self-treated by the public;
- Disruption of the County's communication systems will severely impede the timely delivery of emergency medical response services;
- Difficulties in identifying the deceased might necessitate the services of forensic specialists;
- Casualties and fatalities contaminated by a chemical/biological/radiological/nuclear or explosive (CBRNE) incident might pose a health hazard to those trying to render medical aid or mortuary service to the victims;
- An emergency situation involving large areas of McCreary County may both adversely affect local resource response capabilities, and damage the existing medical infrastructure;
- When local resources can no longer meet the demand of the situation, regional, state, and federal resources may be requested. Additional resource requirements will be requested through the McCreary County Emergency Operations Center which will request assistance through the State Emergency Operations Center.

### **Concept of Operations**

The McCreary County Emergency Operations Center (EOC) serves as the central location for interagency coordination and executive decision-making, including all activities associated with ESF-8/Public Health and Medical Services during a disaster/emergency event. The ESF-8/ Public Health and Medical Services Primary Agencies work with the EOC management team to ensure necessary public health and medical services tasks are accomplished. The Support and Partnering Agencies provide resources and personnel to assist in accomplishing ESF-8 public health and medical services

activities as required by the size and demands of the event. As calls are received requesting services and resources during an emergency/disaster situation, they are routed to the ESF-8/Public Health and Medical Services desk to determine appropriate action.

### **General**

ESF-8/Public Health and Medical Services is organized consistent with the requirements of the National Response Plan, the National Incident Management System and uses the Incident Command System (composed of Planning, Operations, Logistics and Finance/Administration Sections with their standardized Units, Teams, positions, forms and terminology) to manage its emergency/disaster responsibilities. This structure and system supports incident assessment, planning, procurement, deployment and coordination of public health and medical services support operations for McCreary County. Pursuant to the Incident Command System structure, the Planning, Logistics, Finance/Administration and Operations Section Coordinators and staff at the Emergency Operations Center (EOC) assist the EOC Manager in achieving the overall mission. Sections, Units, Teams, staffing levels, etc. are modular and scalable, depending on the type, size, scope and complexity of the emergency or disaster event.

Procedures, protocols and plans for public health and medical services disaster response activities provide guidelines for operations at the McCreary County EOC and in the field.

- The Emergency Operations Plan and corresponding Appendices, Incident Annexes, Support Annexes and Standard Operating Guidelines that describe ESF-8 Public Health and Medical Services capabilities are based on National Planning Scenarios, Universal Task List and Target Capabilities and are the basis of these guidelines;
- Periodic training and exercises are conducted to enhance effectiveness;
- Public health and medical services planning is continuous, beginning well before impact of approaching natural disasters and immediately upon those not forecasted.

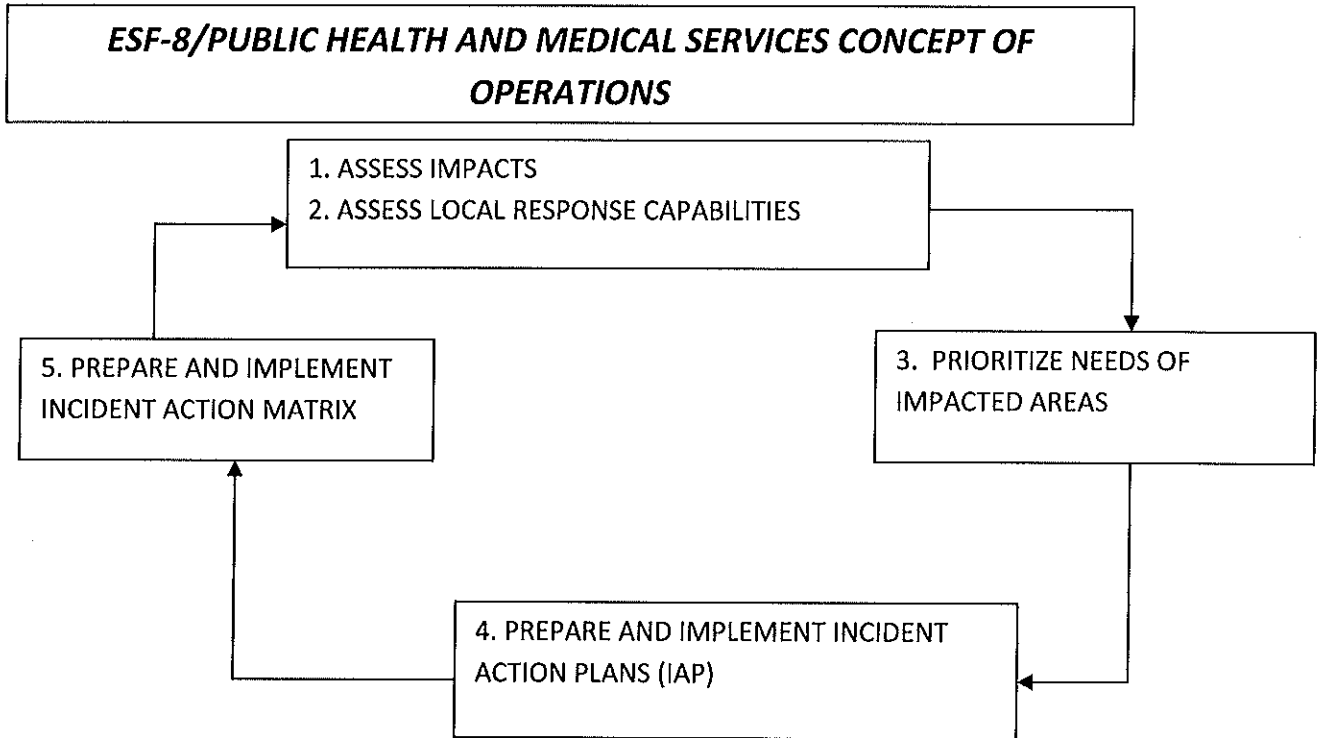
A large event requiring regional, state and/or interstate mutual aid assistance will require ESF-8/Public Health and Medical Services implementation. ESF-8/Public Health and Medical Services will coordinate with support agency counterparts to seek and procure, plan, coordinate and direct the use of any required public health and medical services assets.

When an event requires a specific type or response mode, public health and medical services technical and subject matter expertise may be provided by an appropriate person(s) from a supporting agency with skills relevant to the type of event. The individual will advise and/or direct operations within the context of the Incident Command System structure.

As illustrated in Figure 8-1: *ESF-8/Public Health and Medical Services Concept of Operation*, ESF-8 will give priority to five fundamental, interrelated functions:

- Use technology and human intelligence to collect, analyze and disseminate information on direct and indirect disaster impacts,
- Assess the capabilities of local healthcare providers and agencies to effectively respond to the disaster;
- Assess and prioritize the immediate needs of impacted communities, neighborhoods and areas of the county;

- Incorporate the analyses into Incident Action Plans that establish operational objectives and identify resource requirements to accomplish these objectives;
- Utilize an Incident Action Matrix to establish priorities, assign tasks to agencies and track progress in meeting objectives.



**Figure 8-1: ESF-8/Public Health and Medical Services Concept of Operations**

Each public health and medical services organization which enters into a mutual aid agreement will furnish a copy of the agreement to the McCreary County Emergency Management Agency.

The McCreary County Emergency Management Agency will maintain up-to-date information of public health and medical services in McCreary County including:

- Names of responsible officials (reviewed/updated quarterly),
- ESF-8/Public Health and Medical Services staffing directory (reviewed/updated quarterly),
- ESF-8/Public Health and Medical Services notification lists (reviewed/updated quarterly),
- Major public health and medical services equipment identified in Resource Typing and readiness status (reviewed/updated annually).

The ESF-8/Public Health and Medical Services EOP plus accompanying Appendices, Annexes and Standard Operating guidelines are maintained by the McCreary County Emergency Management Agency and are reviewed and updated by the public health and medical services planning committee

with the McCreary County Emergency Management Agency at least annually. Support agencies may develop and maintain their own similar documents for internal use, which must be compatible with and in support of the overall EOP. All such documents must be compliant with the National Response Plan, National Incident Management System, Incident Command System and the EOP.

Public health and medical services organizations are responsible for training and continuing education of their personnel.

The McCreary County EOC uses WebEOC (crisis management software) to supplement disaster management planning and actions. Specifically, all of the applicable Emergency Support Functions, agency based emergency operations centers, and other facilities or functions as appropriate are able to communicate their needs and status through WebEOC. This allows all of the information to be integrated for the specific event and to assess what actions, resources and needs exist.

### **Notifications**

McCreary County 911 Dispatch is the county's 24 hour Warning Point.

When the county or an area of the county has been threatened or impacted by an emergency or disaster event, McCreary County 911 Dispatch will notify the McCreary County Emergency Management Agency Director who in turn will notify the State Emergency Operations Center Duty Officer. The state Emergency Operations Center notifies applicable state agencies including the Regional Response Manager of KyEM Region 10.

ESF-8/Public Health and Medical Services will be activated or placed on standby upon notification by the McCreary County Emergency Management Agency. Upon instructions to activate this Emergency Support Function, the ESF-8 Coordinator and Support Agencies will implement their procedures to notify and mobilize all personnel, facilities and physical resources potentially needed, based on the emergency circumstance.

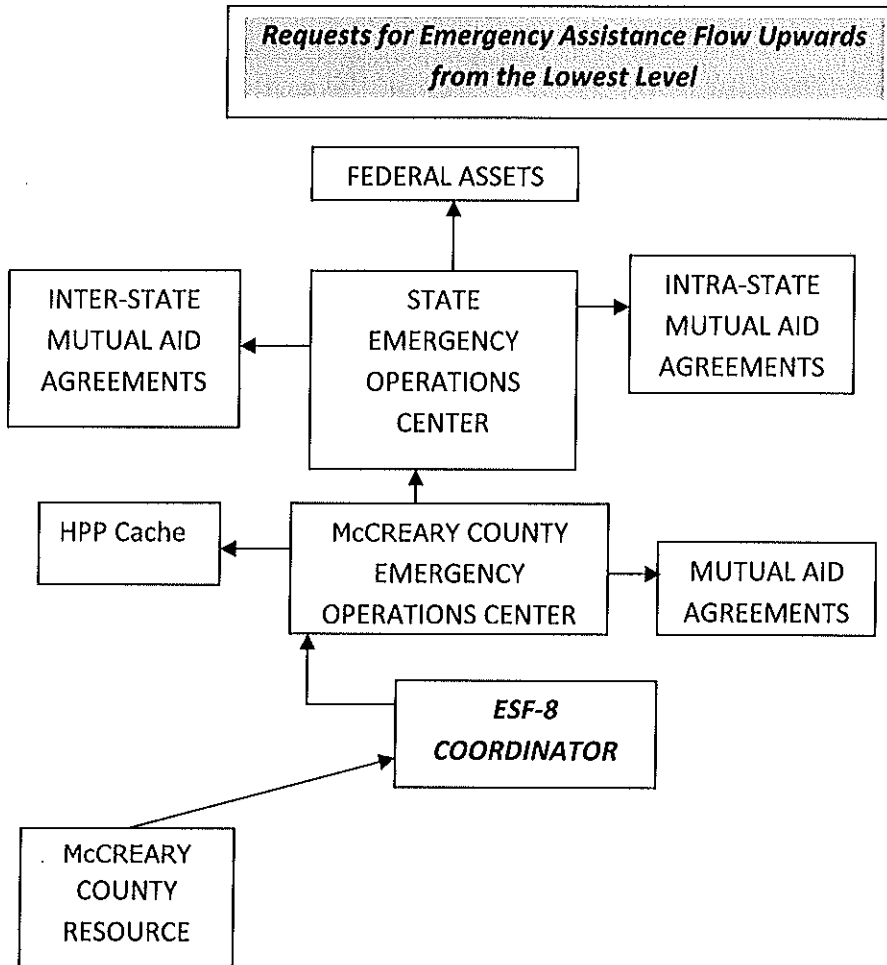
### **Direction and Control**

The McCreary County Health Department and the McCreary County Ambulance Service are the lead agencies for ESF-8 and will coordinate the emergency activities of ESF-8/Public Health and Medical Services. During an EOC activation requiring ESF-8/Public Health and Medical Services, ESF-8 will operate from the McCreary County Emergency Operations Center (EOC) on a 24 hour/7 days a week schedule to help maintain the flow of public health and services.

The McCreary County Emergency Management Agency functions as the official disaster organization for preparedness, mitigation, response and recovery within McCreary County and serves as the focal point for ESF-8 activities. It is responsible for ensuring that all appropriate program departments, support agencies, other Emergency Support Functions and private voluntary agencies have knowledge about the system and ESF-8 expectations.

The ESF-8 system operates at two levels – the Emergency Operations Center and field operations.

All decisions regarding the allocation of health and medical assets are made at the EOC by the ESF-8 Coordinator during the emergency activations. Each support organization will retain administrative control over its own resources and personnel but will be under the operational control of ESF-8.

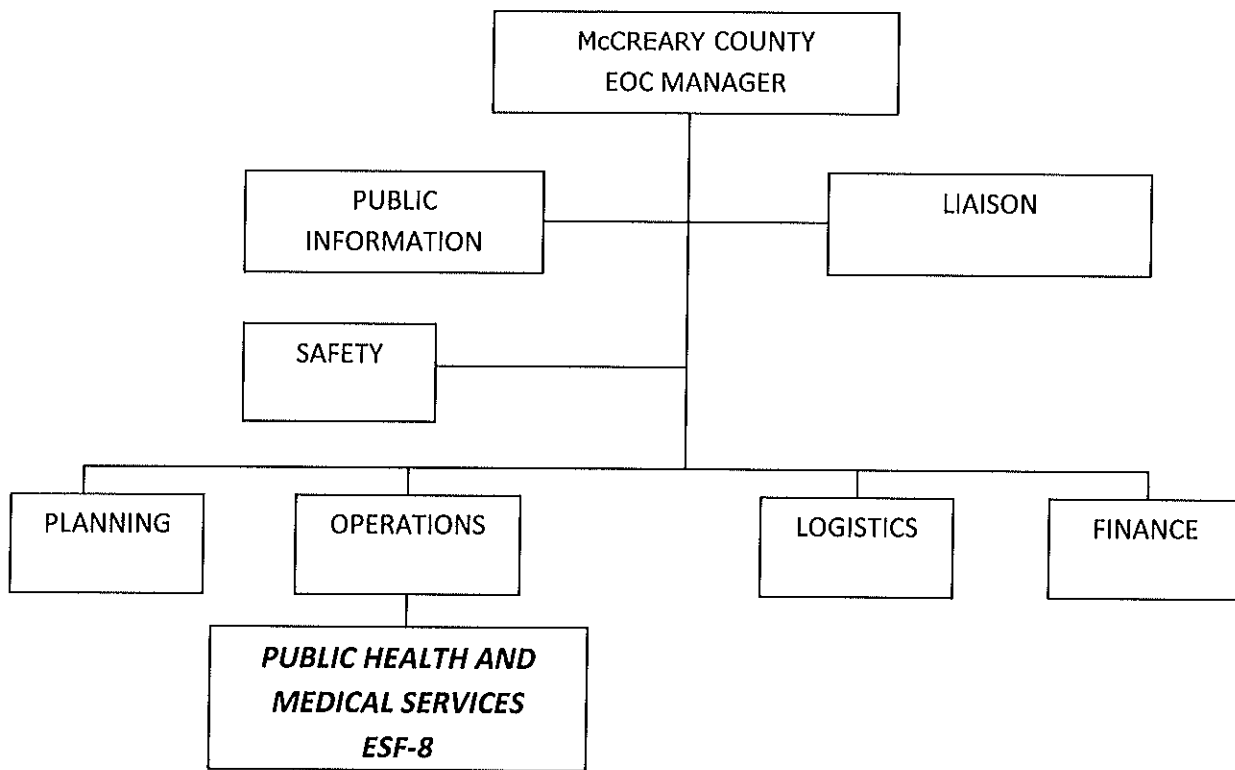


**Figure 8-2: Progressive Requests for Emergency/Disaster Resources**

**Organization**

Response to an emergency/disaster event in McCreary County is progressive as demonstrated in Figure 8-2: *Progressive Requests for Emergency/Disaster Resources*. The initial response to an emergency/disaster situation is met by the use of the public health and medical services resources available at the local level. McCreary County Fiscal Court activates available resources. When the public health and medical services needs for resources and/or services exceed the capability of what is available in the jurisdictions within McCreary County, established mutual aid agreements with surrounding counties or Regional Hospital Preparedness Program (HPP) cache to provide public health and medical services, such resources are utilized. When needed public health and medical services resources cannot be located through mutual aid agreements or with Regional HPP cache, the McCreary County Emergency Operations Center requests resources through the state Emergency Operations Center. The state Emergency Operations Center locates resources through intra- and inter-state mutual aid agreements and federal assets.





**Figure 8-3: Incident Command System Structure: ESF-8/Public Health and Medical Services**

**County**

McCreary County Emergency Management will initiate ESF-8/Public Health and Medical Services notification and will request assistance from the primary and support agencies to help staff the ESF-8 position in the McCreary County Emergency Operations Center.

In the Incident Command Structure, ESF-8/Public Health and Medical Services is located in the Operations Sections as shown in Figure 8-3: *Incident Command System Structure: ESF-8/Public Health and Medical Services*.

During an activation of the EOC, support agency staff is integrated with the public health and medical services staff to provide support that will allow for an appropriate, coordinated and timely response.

Throughout the response and recovery periods, ESF-8:

- Collects, analyzes, and disseminates tactical information on the nature, scope and potential impacts of an incident or major disaster related to public health and medical services;
- Evaluates and analyzes information regarding public health and medical services requests and routes appropriate requests to Logistics;
- Develops and updates assessments of current and anticipated future public health and medical services needs and resource requirements,
- Implements contingency planning to meet anticipated public health and medical services demands or needs;

- Provides this analysis to the Planning Section for incorporation into Incident Action Plans; and
- Uses this intelligence to support the Logistics, Operations and other ESFs in their impact assessment and response missions.

### **Region**

When local resources are overwhelmed or depleted, additional public health and medical services resources are obtained through established mutual aid agreements McCreary County has with counties in the region or with Regional HPP cache. The Logistics Chief, in consultation with the requesting jurisdiction, contacts the agencies with whom mutual agreements are in effect to determine if the requested resources are available.

Additionally, either the KyEM Region 10 Response Manager or the state Emergency Operations Center can be contacted to determine the appropriate state agency serving as the lead agency for public health and medical services coordination/support at the state level. That agency can designate a liaison to the McCreary County EOC to assist Emergency Support Function 8 and to the extent capable provide coordinators, assessors and operational personnel in support of the EOC or field activities.

On activation of an emergency operations center in more than one county, the lead agency for public health and medical services coordination/support at the state level may support the coordination of the event response with regional resources or request additional resources through the State Emergency Operations Center.

### **State**

During an emergency or disaster event, ESF-8/comparable primary and support agencies at the State Emergency Operations Center report and function under the overall direction of the Kentucky Division of Emergency Management Director.

During the response phase, ESF-8/comparable evaluates and analyzes information regarding public health and medical services requests. ESF-8/comparable also develops and updates assessments of the public health and medical services situation/status in the impact area and initiate contingency planning to meet anticipated demands and needs.

The Kentucky Division of Emergency Management develops and maintains the overall State Emergency Operations Plan and accompanying Appendices and Standard Operating Guidelines that govern response actions related to emergencies. Support agencies may develop and maintain their own similar documents for internal use, which must be compatible with and in support of the overall Emergency Operations Plan. All such documents will comply with the National Response Plan, the National Incident Management System and the Incident Command System.

### **Actions**

Actions initiated by ESF-8 are grouped into the phases of emergency management: preparation, mitigation, response and recovery. Each phase requires significant cooperation and collaboration between all supporting agencies and the intended recipients of service. ESF-8 encompasses a full range of activities from training to the provision of field services.

ESF-8/Public Health and Medical Services coordinates and may assume direct operational control of the following functional areas:

Health Department

- Assessment of health/medical needs;
- Request activation of Lake Cumberland District Medical Reserve Corps (MRC) or if need cannot be met locally, request deployment of health/medical response teams through the Commonwealth Emergency Operations Center (CEOC);
- Establishment of liaison with Kentucky Department of Public Health;
- Disease control/epidemiology and inoculation of the population during a disaster;
- Coordination for obtaining, assembling and delivering health/medical care personnel, equipment and supplies;
- Provision of vaccinations for workers remaining in evacuated areas;
- Food/drug safety;
- Radiological/chemical/biological hazards;
- Public health information release(s);
- Vector control/monitoring;
- Collaborate with ESF-6 to ensure basic medical needs are met in the functional and access needs population in sheltering operations in McCreary County;
- Coordination of medical material needed to meet the basic medical needs of shelter occupants;
- Inspection of each shelter before its opening by environmental health specialist;
- Activation of LCDMRC volunteers if needed to meet surge capacity;
- Organization and coordination of mass prophylaxis.

EMS

- Patient evacuation assistance;
- Emergency medical care personnel, equipment and supplies;
- Implementation and enforcement of Altered Standards of Care;
- Emergency responder health and safety;
- Establishment of plans for requesting additional support during a disaster or emergency;
- Assistance in staffing and coordinating first aid stations.

Coroner's Office

- Provision of mortuary services during the disaster period;
- Inventorying and planning for the personnel, supply and equipment requirements for the disaster period and the means of fulfilling those requirements;
- Organization/utilization of mortuary personnel from other counties;
- Plan for the selection and operation of emergency morgues during a disaster.

Functional and Access Needs Population

General population shelters will open a Functional and Access Needs section if deemed necessary. Only persons with Functional and Access Needs will be admitted to this section and must be accompanied by a caregiver. Clients will be referred to an alternate site if their needs are too complex for the Functional and Access Needs section or do not meet the minimum requirements.

**Preparedness Actions**

Actions and activities that develop health and medical response capabilities may include planning, training, orientation sessions, and exercises for ESF-8 personnel and other emergency support functions that will respond with ESF-8. Local agencies will jointly address planning issues on an on-going basis to identify response zones, potential staging areas, potential medical facilities and the maintenance and future development of specialized teams.

Initiatives also include:

- Planning with ESF-8 support agencies and other emergency support functions to refine Health and Medical operations;
- Conducting training and exercises for ESF-8;
- Preparing and maintaining county-level documentation to include: emergency operating procedures, resource inventories, personnel rosters and resource mobilization information necessary for implementation of the responsibilities of the lead agency;
- Ensuring lead agency personnel are trained in their responsibilities and duties;
- Developing and implementing emergency response and health and medical strategies;
- Provide information on critical facilities to the McCreary County EMA and develop protocols for frequently provided services;
- Maintaining liaison with support agencies;
- Provide information on possible functional and access needs that may arise during evacuations, sheltering and other event responses;
- Developing public information materials for persons with functional and access needs.

### **Response Actions**

Response actions/initiatives include:

- Coordinating operations in the McCreary County EOC, Lake Cumberland District Health Department Operations Center (DOC) and/or at other locations as required;
- Establishing and maintaining a system to support on-scene health and medical operations and coordination with McCreary County EOC, ESF-8 and the State EOC;
- Deploying Impact Assessment Teams to determine post-event health impact on critical infrastructure and essential functions;
- Pre-positioning response resources when it is apparent that health and medical resources will be necessary.
- Relocate health and medical resources when it is apparent that they are endangered by the likely impacts of the emergency situation;
- Monitoring and directing health and medical resources and response activities;
- Participating in EOC briefings, Incident Action Plans, Situation Reports and meetings;
- Coordinating with support agencies, as needed, to support emergency activities;
- Obtaining other resources through the Statewide Emergency Management Mutual Aid and Assistance Agreement;
- Coordinating all health and medical resources into the affected areas from designated staging areas;
- Coordinating with other jurisdictions' ESFs or like function to obtain resources and facilitation of an effective emergency response among all participating agencies;
- Ensuring patient confidentiality protection, in accordance with the Health Insurance Portability and Accountability Act (HIPAA) by not releasing medical information on individual patients to the general public;
- Obtaining non-specific information on casualties/patients and provide to the American Red Cross for inclusion in the Disaster Welfare Information System, to ESF-15/Public Information for informational releases and to ESF-5/Emergency Management for development of Situation Report(s) for dissemination to the State EOC.

### **Recovery Actions**

The activities of ESF-8 should assist systems in returning to normal pre-event status by:

- Providing support as required until response activities are concluded or until they can be managed and staffed by the primary incident agency or jurisdiction;
- Providing support as required to support the recovery phase;
- Providing documentation for the financial reimbursement process for these activities as support is available.

### **Mitigation Actions**

Mitigation actions/initiatives include:

- Providing personnel with the appropriate expertise to participate in activities designed to reduce or minimize the impact of future disasters.

## **Responsibilities**

**All tasked agencies will:**

- Develop applicable standard operating procedures, guidelines and/or checklists;
- Train staff in the standard operating procedures, guidelines and/or checklists that outline the courses of action to be taken during a pending or actual disaster or emergency situation;
- Participate in drills to exercise these procedures and actions on a regular basis;
- Participate in honest appraisals of the performance of the public health and medical services role and actions after each drill, exercise and actual activation of the McCreary County EOC;
- Participate in a continuous quality improvement process that uses the findings of the performance appraisals and the lessons learned to continuously refine the role and actions of this emergency support function in the overall functioning of the McCreary County EOC and incorporate these into clearly written procedures which are shared with all staff and involved agencies;
- Provide on-going status reports as requested by the Emergency Management Coordinator;
- Document all costs and expenses associated with response and recovery activities taking care to clearly separate disaster-related work from daily work in the event that state and federal reimbursement becomes available;
- Maintain up-to-date rosters for notifying personnel;
- Perform other emergency responsibilities as assigned.

**Primary Agencies:** McCreary County Health Department  
McCreary County Ambulance Service

Duties include:

- Providing leadership in directing, coordinating and integrating overall McCreary County efforts to provide health and medical assistance to affected areas and populations;

- Staffing and operating a National Incident Management system compliant command and control structure (i.e., Incident Command System) to assure that services and staff are provided to areas of need;
- Coordinating and directing the activation and deployment of McCreary County health and medical agencies, service personnel, supplies, and equipment and provide certain direct resources;
- Coordinating supplemental assistance in identifying and meeting the health and medical needs of disaster victims;
- ESF-8 representatives/designees jointly evaluate the emergency, make strategic decisions, identify resource needs and secure resources required for field operations;
- Coordinating the organization, assignment and staffing for ESF-8 Operations;
- Coordinating response for:
  - Safety of food and drugs;
  - Vector control;
  - Behavioral health;
  - Victim identification/mortuary services;
  - Health education;
  - Public information related to Public Health and Medical Services;
  - Laboratory services;
  - Mass medical care;
  - Public Health and sanitation;
  - Mass prophylaxis of population;
- Providing the coordination of the following resources:
  - Medical equipment and supplies;
  - Medical personnel;
  - Health administrators;
  - Pharmacy services;
  - Environmental health specialists;
  - Laboratories and laboratory personnel;
  - Nutritional services;
  - Epidemiology;

- Disaster response expertise;
- Dental;
- Immunizations;
- Discharge planning at the Functional and Access Needs section within the general shelter;
- Outreach capability;
- Public information and education
- Coordinating the response and location of deployed DMAT teams;
- Obtaining medical equipment and supplies from local vendors where possible; utilize the State Emergency Operations Center for other resources
- Collaborate with ESF-6 to coordinate medical staffing of the functional and access needs section in a general population shelter; Their duties must be within their scope of practice and may include-
  - Administering first aid;
  - Assisting in triage/screening and displaced persons assignment;
  - Keeping patient records;
  - Evaluating sanitary conditions of shelters, and;
  - Consulting with environmental health specialists as needed.

**Support Agencies:**

Support agencies will provide assistance to the Emergency Support Function with:

- Performing the above-outlined tasks as requested by the ESF8 Coordinator;
- Services, staff, equipment, and supplies that complement the entire emergency response effort
- Reporting current resources capabilities on a regular basis.

**Administration and Support**

**Support**

Requests for emergency assistance will be resolved at the lowest level with appropriate response resources capabilities. Unresolved assistance requests will normally flow upward from cities to the county and/or field deployed command posts to responsible representatives in the State EOC, and as required to other states or the federal government for assistance support.



**Agreements and Understandings**

All agreements and understandings entered into for the purchase, lease, or otherwise use of equipment and services, will be in accordance with the provision of laws and procedures.

**Status Reports**

The primary agency will maintain status of all outstanding assistance requests and unresolved ESF-8/Public Health and Medical Services related issues. This information will be summarized into periodic status reports and submitted in accordance with applicable operating procedures.

**Expenditures and Recordkeeping**

Each ESF-8/Public Health and Medical Services agency is responsible for establishing administrative controls necessary to manage the expenditure of funds and to provide reasonable accountability and justification for federal reimbursement in accordance with the established guidelines. The first source of funds for expenditures by agencies in response to emergency, imminent disaster, or recovery from a catastrophic incident, is to be from funds associated with each local agency.

ESF-8/Public Health and Medical Services is responsible for managing financial matters specific to ESF-8 activity and related to resources procured/used during an event and forwarding that information to the Finance/Administration Section. However, each local government/agency/department must also track and record its own expenditures to ensure accuracy with any submissions for potential reimbursement. Information will be provided post-event as to application procedures for reimbursement.

The Finance/Administration Section will coordinate with the Logistics Section to ensure that procurements and staff hours are properly documented and processed for potential reimbursement. It will also be responsible for follow-up on all financial issues through coordination with McCreary County Government and other local governments' fiscal and personnel management officials, Kentucky Division of Emergency Management fiscal agents, Federal Emergency Management Agency fiscal agents and directly with vendors as necessary.

Expenditures by other departments for activity not directly related to ESF-8/Public Health and Medical Services will be documented by those entities and submitted directly to the Finance/Administration Section as soon as possible.

**After Action Review**

Following the conclusion of any significant emergency, incident or exercise, the primary agency representative will facilitate an After Action Review (AAR) of the group activities during the emergency/incident/exercise with the ESF-8/Public Health and Medical Services agencies, identifying the successes and identifying areas that can be strengthened and enhanced for efficiency in a continuous quality improvement process for the overall performance of the McCreary County Emergency Operations Center.

**Statement of Concurrence  
PUBLIC HEALTH AND MEDICAL SERVICES  
ESF-8**

McCREARY COUNTY EMERGENCY OPERATIONS PLAN

The signature appearing below indicates the individual has the authority to commit resources of the agency represented and agrees to the functions and tasks prescribed for this ESF.

**PRIMARY AGENCIES:** McCreary County Health Department  
McCreary County Ambulance Service

*Shawn D. Crabtree*

(Signature)

Shawn D. Crabtree 10/4/12

(Printed Name)

(Date)

*Jimmy Barnett*

(Signature)

Jimmy Barnett 10-12-12

(Printed Name)

(Date)