

**McCREARY COUNTY, KENTUCKY
EMERGENCY OPERATIONS PLAN**



FIREFIGHTING

ESF-4

Coordinates and organizes firefighting and rescue resources in preparing for, responding to and recovering from emergency/disaster incidents which impact the citizens of McCreary County.

FIREFIGHTING

ESF-4

ESF Coordinator: Whitley City Fire Protection District

Primary Agencies: Whitley City Fire Protection District
North McCreary Fire Protection District
South McCreary County Fire District
West McCreary Fire District
Eagle/Sawyer Fire Protection District

Support Agencies: **McCreary County Fiscal Court**
McCreary County Judge Executive and Magistrates
McCreary County Sheriff's Office
McCreary County Emergency Management Agency
McCreary County Road Department
McCreary County EMS
McCreary County Coroner's Office
WMD/HAZMAT 12 Regional Response Team
TASK FORCE Region 11 Response Team

Other Local Agencies

McCreary County Public Schools
Lake Cumberland Area Chapter of American Red Cross

State Agencies

Kentucky Forestry Service
Kentucky State Fire Marshal Office
Kentucky State Police
Kentucky Motor Vehicle Enforcement
Kentucky Department of Transportation
Kentucky Division of Emergency Management
Kentucky Community and Technical College System
Kentucky Fire Commission

Introduction

The Firefighting Emergency Support Function (ESF-4):

- Identifies and organizes the resources (human, technical, equipment, facility, materials and/or supplies) available to McCreary County to address and support firefighting needs in the event of either a natural or man-made disaster or emergency situation;
- Identifies the responsibilities of organizations charged with providing firefighting in the case of a disaster or emergency situation;
- Is established to assure the provision of firefighting support to McCreary County and private-sector response before, during and after an incident/event;
- Provides personnel and resources to support prevention, preparedness, protection, response, recovery, and mitigation in support of the primary emergency management objectives of firefighting in emergency and disaster situations.

Mission

The mission of the Firefighting Emergency Support Function is to coordinate and organize firefighting and rescue resources in preparing for, responding to and recovering from emergency/disaster incidents which impact the citizens of McCreary County.

Scope

The scope of this ESF includes:

- Assessing firefighting system damage and determining the required resources to restore such firefighting systems;
- Coordinating with ESF-4/Firefighting support agencies for assistance in helping firefighting suppliers obtain information, equipment, specialized labor, fuel and transportation to repair or restore energy systems;
- Coordinating information with local, state, and federal officials and suppliers about available firefighting supply recovery assistance;
- Providing technical assistance concerning firefighting systems.

ESF-4/Firefighting is a functional annex to the McCreary County Emergency Operations Plan (EOP) and to the extent possible, information contained in other sections of the EOP will not be repeated in this ESF annex. Many of the agencies involved in ESF-4/Firefighting activities have existing emergency plans and procedures that this ESF Annex is designed to complement and support.

This Emergency Support Function applies to all agencies with assigned firefighting emergency responsibilities as described in the McCreary County EOP.

Situations and Assumptions

Some of the situations and assumptions involved in ESF-4 planning include:

- Fire protection and rescue operations are challenges faced daily by local fire departments and rescue squads;

McCREARY COUNTY EMERGENCY OPERATIONS PLAN

- These activities become even more intense during emergency/multi-hazard situations such as fires, major hazardous materials incidents, flooding, widespread power outages, loss of supporting critical infrastructure, etc.
- Such occurrences require training and equipment for specialized emergency firefighting, hazardous materials response, and rescue activities including provisions for extended mass care/triage operations, and extensive decontamination operations;
- Fire emergencies may reach such magnitudes as to require resources from adjacent local, state, federal, or private organizations, through local mutual aid agreements;
- The potential for a fire due to an incident can result in the same level of mobilization as an actual fire;
- Any disaster may necessitate mobilization of fire service resources for the preservation and protection of life and property from threats other than fire;
- There is the potential for immobilization of local fire service resources due to terrorist actions, civil disturbances, bombing, blackmail, sniping, or other acts of violence, directed at the fire resources;
- Available fire protection and rescue personnel and equipment within McCreary County will be able to cope with most emergency situations using local resources and mutual aid agreements, when necessary;
- The fire departments and rescue squads within McCreary County must be prepared to support each other during emergency situations using available expertise, equipment, and manpower, to ensure efficient and effective emergency operations;
- Fire service personnel may assist in rescue operations;
- Drought conditions can be a contributing factor to wild land and forest fires with wild land and forest areas being especially vulnerable to arson;
- A catastrophic earthquake could result in many urban, rural and wild land fires in which local fire services may be totally committed depending on the specific impact area;
- Local fire services may become involved in operations that do not directly involve fires and may be utilized to augment emergency services personnel during major disasters;
- When local resources do not exist or are depleted, outside assistance may be made available through other local, state, and federal governments, but may not arrive on scene for many hours.

Concept of Operations

The McCreary County Emergency Operations Center (EOC) serves as the central location for interagency coordination and executive decision-making, including all activities associated with ESF-4/Firefighting during a disaster/emergency event. The ESF-4/Firefighting Primary Agencies work with the EOC management team to ensure necessary firefighting tasks are accomplished. The Support and Partnering Agencies provide resources and personnel to assist in accomplishing ESF-4 activities as required by the size and demands of the event. As calls are received requesting services and resources during an emergency/disaster situation, they are routed to the ESF-4/Firefighting desk to determine appropriate action.

General

ESF-4/Firefighting is organized consistent with the requirements of the National Response Plan, the National Incident Management System and uses the Incident Command System (composed of Planning, Operations, Logistics and Finance/Administration Sections with their standardized Units, Teams, positions, forms and terminology) to manage its emergency/disaster responsibilities. This structure and system supports incident assessment, planning, procurement, deployment and coordination of firefighting support operations for McCreary County. Pursuant to the Incident Command System structure, the Planning, Logistics, Finance/Administration and Operations Section Coordinators and staff at the Emergency Operations Center (EOC) assist the EOC Manager in achieving the overall mission. Sections, Units, Teams, staffing levels, etc. are modular and scalable, depending on the type, size, scope, and complexity of the emergency or disaster event.

Procedures, protocols and plans for firefighting disaster response activities provide guidelines for operations at the McCreary County Emergency Operations Center and in the field.

- The Emergency Operations Plan and corresponding Appendices, Incident Annexes, Support Annexes and Standard Operating Guidelines that describe ESF-4/Firefighting capabilities are based on National Planning Scenarios, Universal Task List and Target Capabilities and are the basis of these guidelines;
- Periodic training and exercises are conducted to enhance effectiveness;
- Firefighting planning is continuous, beginning well before impact of approaching natural disasters and immediately upon those not forecasted.

A large event requiring regional, state, and/or interstate mutual aid assistance will require ESF-4/Firefighting implementation. ESF-4/Firefighting will coordinate with support agency counterparts to seek and procure, plan, coordinate and direct the use of any required firefighting assets.

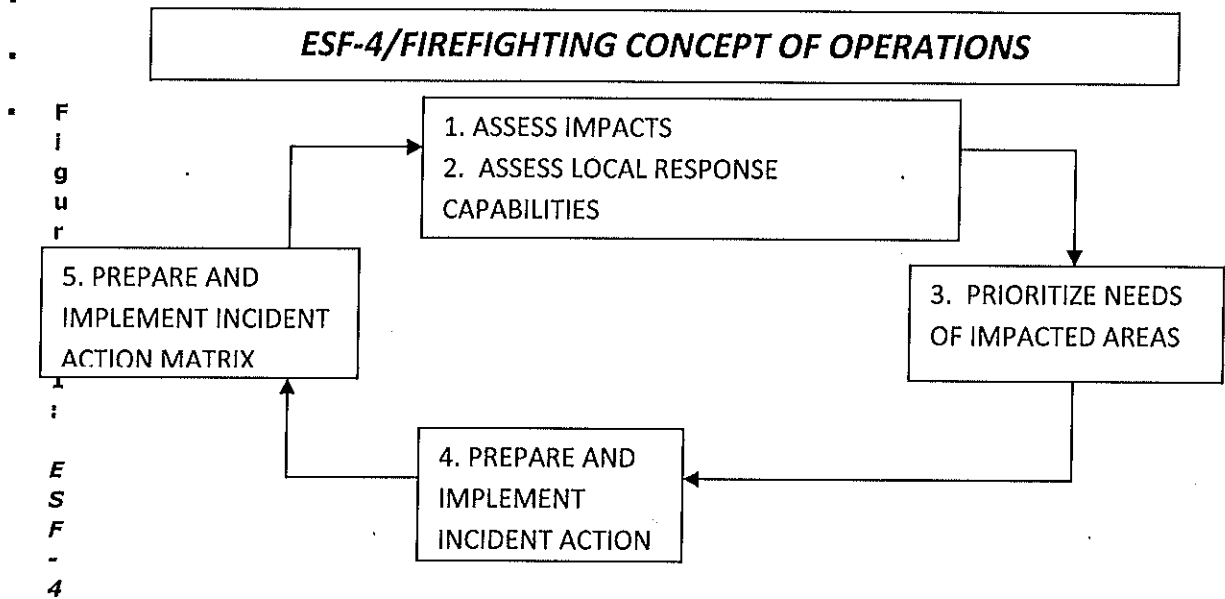
When an event requires a specific type or response mode, firefighting technical and subject matter expertise may be provided by an appropriate person(s) from a supporting agency with skills relevant to the type of event. The individual will advise and/or direct operations within the context of the Incident Command System structure.

As illustrated in Figure 4-1: *ESF-4/Firefighting Concept of Operation*, ESF-4 will give priority to five fundamental, interrelated functions:

- Use technology and human intelligence to collect, analyze and disseminate information on direct and indirect disaster impacts,

McCREARY COUNTY EMERGENCY OPERATIONS PLAN

- Assess the capabilities of local government, the business community and volunteer agencies to effectively respond to the disaster;
- Assess and prioritize the immediate needs of impacted communities, neighborhoods and areas of the county;
- Incorporate the analyses into Incident Action Plans that establish operational objectives and identify resource requirements to accomplish these objectives;
- Utilize an Incident Action Matrix to establish priorities, assign tasks to agencies, and track progress in meeting objectives.



ESF-4/Firefighting Concept of Operations

Each firefighting organization which enters into a mutual aid agreement will furnish a copy of the agreement to the McCreary County Emergency Management Agency.

The McCreary County Emergency Management Agency will maintain up-to-date information of firefighting services in McCreary County including-

- Names of responsible officials (reviewed/updated annually),
- ESF-4/Firefighting staffing directory (reviewed/updated annually),
- ESF-4/Firefighting notification lists (reviewed/updated annually),
- Major firefighting equipment identified in Resource Typing and readiness status (reviewed/updated annually).

The ESF-4/Firefighting Emergency Operations Plan plus accompanying Appendices, Annexes and Standard Operating guidelines are maintained by the McCreary County Emergency Management Agency and are reviewed and updated by the firefighting planning committee with the McCreary County Emergency Management Agency at least annually. Support agencies may develop and maintain their own similar documents for internal use, which must be compatible with and in support of the overall Emergency Operations Plan. All such documents must be compliant with the National

McCREARY COUNTY EMERGENCY OPERATIONS PLAN

Response Plan, National Incident Management System, Incident Command System, and the Emergency Operations Plan (EOP).

Firefighting organizations are responsible for training and continuing education of their personnel.

The McCreary County Emergency Operations Center uses WebEOC (crisis management software) to supplement disaster management planning and actions. Specifically, all of the applicable Emergency Support Functions, agency based emergency operations centers, and other facilities or functions as appropriate are able to communicate their needs and status through WebEOC. This allows all of the information to be integrated for the specific event and to assess what actions, resources and needs exist.

Notifications

McCreary County 911 Dispatch is the county's 24 hour Warning Point.

When the county or an area of the county has been threatened or impacted by an emergency or disaster event, McCreary County 911 Dispatch will notify the McCreary County Emergency Management Agency Director who in turn will notify the State Emergency Operations Center Duty Officer. The state Emergency Operations Center notifies applicable state agencies including the Regional Response Manager of KyEM Region 10.

ESF-4/Firefighting will be activated or placed on standby upon notification by the McCreary County Emergency Management Agency. Upon instructions to activate this Emergency Support Function, the ESF-4/Firefighting Coordinator and Support Agencies will implement their procedures to notify and mobilize all personnel, facilities and physical resources potentially needed, based on the emergency circumstance.

Direction and Control

ESF-4/Firefighting operates from the McCreary County Emergency Operations Center (EOC) on a 24 hour/7 days a week schedule to help maintain the flow of firefighting services.

The McCreary County Emergency Management Agency functions as the official disaster organization for preparedness, mitigation, response and recovery within McCreary County and serves as the focal point for ESF-4 activities. It is responsible for ensuring that all appropriate program departments, support agencies, other Emergency Support Functions, and private voluntary agencies have knowledge about the system and ESF-4 expectations.

The ESF-4 system operates at two levels – the Emergency Operations Center and field operations.

All management decisions regarding county and/or regional resource allocation are made at the Emergency Operations Center by the ESF-4/Firefighting Coordinator during emergency activations. In accordance with a mission assignment from ESF-4 and further mission tasking by a local primary agency, each support organization assisting in an ESF-4 assignment will retain administrative control over its own resources and personnel but will be under the operational control of ESF-4/Firefighting.

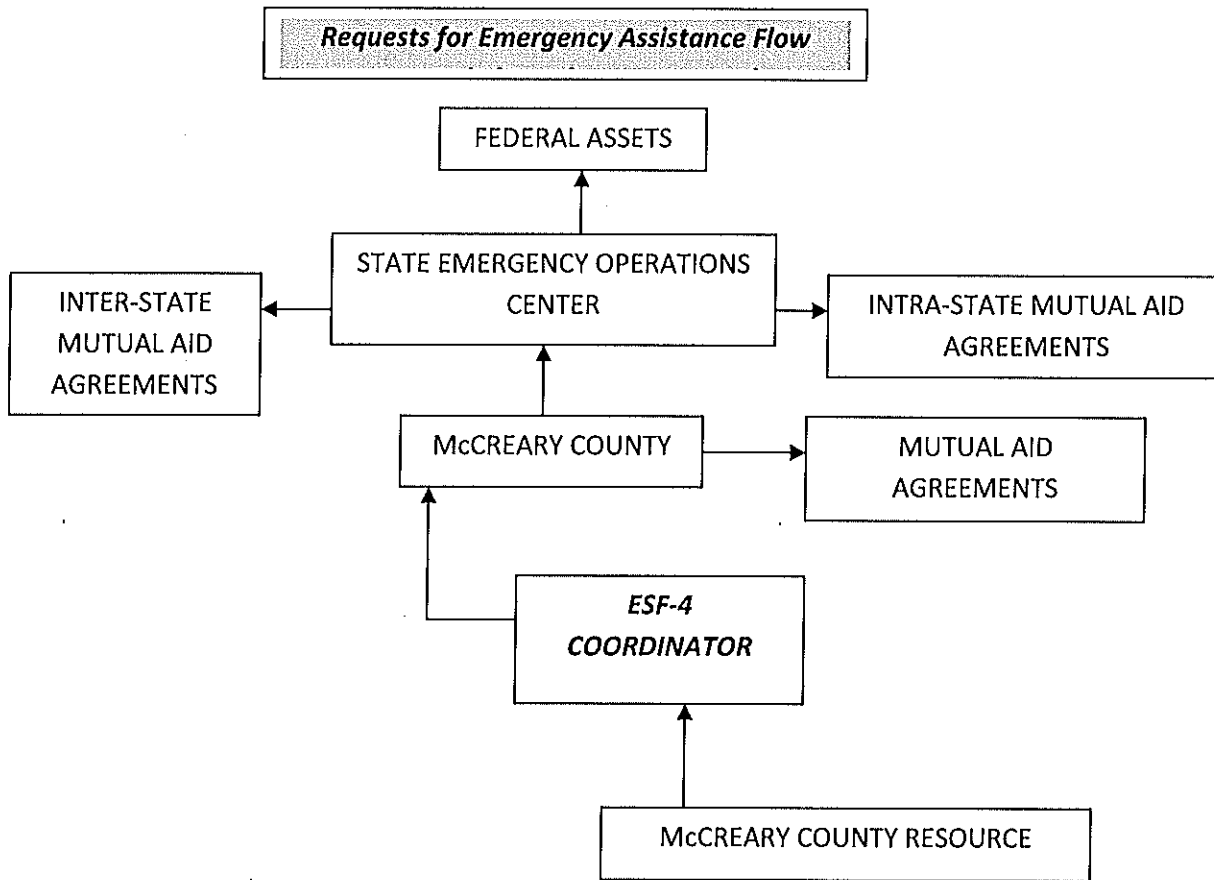


Figure 4-2: Progressive Requests for Emergency/Disaster Resources

Organization

Response to an emergency/disaster event in McCreary County is progressive as demonstrated in Figure 4-2: *Progressive Requests for Emergency/Disaster Resources*. The initial response to an emergency/disaster situation is met by the use of the firefighting resources available at the local level. When the firefighting needs for resources and/or services exceed the capability of what is available in the jurisdictions within McCreary County, established mutual aid agreements with surrounding counties to provide firefighting and/or rescue, such resources are utilized. When needed firefighting and/or rescue resources cannot be located through mutual aid agreements, the McCreary County EOC requests resources through the state Emergency Operations Center. The state Emergency Operations Center locates resources through intra- and inter-state mutual aid agreements and federal assets.

County

McCreary County Emergency Management will initiate ESF-4/Firefighting notification and will request assistance from the primary and support agencies to help staff the ESF-4 position in the McCreary County Emergency Operations Center.

McCREARY COUNTY EMERGENCY OPERATIONS PLAN

In the Incident Command Structure, ESF-4/Firefighting is located in the Operations Section as shown in Figure 4-3: *Incident Command System Structure: ESF-4/Firefighting*.

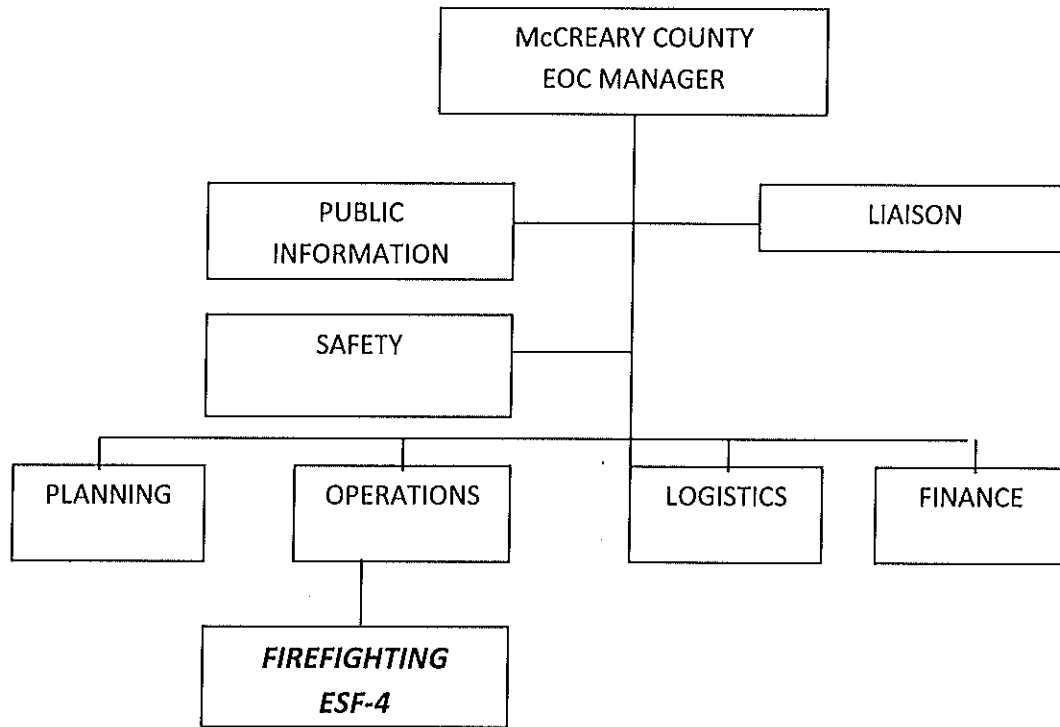


Figure 4-3: Incident Command System Structure ESF-4/Firefighting

During an activation of the EOC, support agency staff is integrated with the firefighting staff to provide support that will allow for an appropriate, coordinated, and timely response.

Throughout the response and recovery periods, ESF-4/Firefighting:

- Collects, analyzes, and disseminates tactical information on the nature, scope and potential impacts of an incident or major disaster related to firefighting
- Evaluates and analyzes information regarding firefighting requests;
- Develops and updates assessments of current and anticipated future firefighting needs and resource requirements,
- Implements contingency planning to meet anticipated firefighting demands or needs;
- Incorporates this analysis into Incident Action Plans; and
- Uses this intelligence to support the Logistics, Operations, and other ESFs in their impact assessment and response missions.

Region

When local resources are overwhelmed or depleted, additional firefighting resources are obtained through established mutual aid agreements McCreary County has with counties in the region. The Operations Chief, in consultation with the requesting jurisdiction, contacts the agencies with whom mutual agreements are in effect to determine if the requested resources are available.

McCREARY COUNTY EMERGENCY OPERATIONS PLAN

Additionally, either the KyEM Region 10 Response Manager or the state Emergency Operations Center can be contacted to determine the appropriate state agency serving as the lead agency for firefighting coordination/support at the state level. That agency can designate a liaison to the McCreary County EOC to assist Emergency Support Function 4 and to the extent capable provide coordinators, assessors and operational personnel in support of the EOC or field activities.

On activation of an emergency operations center in more than one county, the lead agency for firefighting coordination/support at the state level may support the coordination of the event response with regional resources or request additional resources through the State EOC.

State

During an emergency or disaster event, ESF-4/comparable primary and support agencies at the State Emergency Operations Center report and function under the overall direction of the Kentucky Division of Emergency Management Director.

During the response phase, ESF-4/Firefighting evaluates and analyzes information regarding firefighting requests. ESF-4/Firefighting also develops and updates assessments of the firefighting situation/status in the impact area and initiate contingency planning to meet anticipated demands and needs.

The Kentucky Division of Emergency Management develops and maintains the overall State Emergency Operations Plan and accompanying Appendices and Standard Operating Guidelines that govern response actions related to emergencies. Support agencies may develop and maintain their own similar documents for internal use, which must be compatible with and in support of the overall Emergency Operations Plan. All such documents will comply with the National Response Plan, the National Incident Management System, and the Incident Command System.

Actions

ESF-4/Firefighting encompasses a full range of activities from training to the provision of field services. It also coordinates and may assume direct operational control of the following provided services:

- Assessment of fire service needs and potential impacts;
- Fire service personnel;
- Fire service equipment and supplies;
- Evacuation and re-entry support;
- Emergency responder health and safety;
- Radiological/chemical/biological hazards monitoring/mitigation;
- Mental health and crisis counseling for responders;
- Fire service public information and risk communication;
- Fire service management, command and control of assets;
- Fire service activities related to terrorist threats and/or events;
- Logistical Staging Areas and Points of Dispensing;

- Catastrophic incident and alternate fire service facility support.

Actions initiated by ESF-4/Firefighting are grouped into the phases of emergency management: preparation, mitigation, response, and recovery. Each phase requires specific skills and knowledge to accomplish. Each phase requires significant cooperation and collaboration between all supporting agencies and the intended recipients of service.

Preparedness Actions

Actions and activities that develop fire service response capabilities may include planning, training, orientation sessions, and exercises for ESF-4/Firefighting personnel and other emergency support functions that will respond with ESF-4. This involves the active participation of local inter-agency preparedness organizations, which collaborate in such activities on a regular basis. Local agencies will jointly address planning issues on an on-going basis to identify response zones, potential staging areas, potential medical facilities and the maintenance and future development of specialized teams.

Initiatives also include:

- Conducting planning with ESF-4/Firefighting support agencies and other emergency support functions to refine fire service operations;
- Developing and refining procedures for rapid impact assessment per field surveys;
- Conducting training and exercises for Emergency Operations Center and fire service response team members;
- Preparing and maintaining emergency operating procedures, resource inventories, personnel rosters and resource mobilization information necessary for implementation of the responsibilities of the lead agency;
- Ensuring lead agency personnel are trained in their responsibilities and duties;
- Developing and implementing emergency response and firefighting strategies;
- Developing and presenting training courses for ESF-4/Firefighting personnel, provide information on critical facilities/infrastructure to the McCreary County Emergency Management Agency and develop protocols for frequently provided services;
- Maintaining liaison with support agencies;
- Conducting vulnerability analyses at critical facilities and make recommendations to improve the physical security;
- Conducting All Hazards exercises involving ESF-4/Firefighting.

Response Actions

Response actions/initiatives include:

- Coordinating operations at the ESF-4/Firefighting position in the McCreary County EOC and/or at other locations as required;
- Coordinating needs and response actions with each fire protection district and Establishing and maintaining a system to support on-scene direction/control and coordination with McCreary County's EOC, State EOC, or other coordination entities as appropriate;

- Establishing mutual aid procedures for the following resources: fire suppression, interoperable communications and others as appropriate;
- Coordinating resource management and logistical support;
- Implementing Disaster Assessment Teams to determine post-event effect on emergency services, functional group resources and the ability to perform continuity of operations for essential functions;
- Monitoring and directing firefighting resources and response activities to include pre-positioning for response/relocation due to the potential impact(s) of the emergency situation;
- Participation in EOC briefings, development of Incident Action Plans and Situation Reports, and meetings;
- Coordination with support agencies, as needed, to support emergency activities;
- Obtaining other resources through the Statewide Emergency Management Mutual Aid Agreements;
- Coordinating all resources into the affected areas from designated staging areas;
- Coordination with other jurisdictions' ESFs or like function to obtain resources and facilitate an effective emergency response among all participating agencies.

Recovery Actions

Recovery actions/initiatives include:

- Contacting each fire district for initial damage assessment of personnel, equipment and supplies;
- Maintaining documentation of all reported damage by fire district;
- Consulting with the Operations Section Chief and obtaining additional fire service resources via established mutual aid agreements.

Mitigation Actions

Mitigation actions/initiatives include-

- Identifying and seeking funding for retrofitting critical facilities and providing auxiliary power;
- Providing personnel with the appropriate expertise to participate in activities designed to reduce or minimize the impact of future disasters.

Responsibilities

All tasked agencies will:

- Develop applicable standard operating procedures, guidelines and/or checklists which clearly define the role of this emergency support function in the overall functioning of the McCreary County EOC and detail the accomplishment of their assigned functions;
- Train staff in the standard operating procedures, guidelines and/or checklists that outline the courses of action to be taken during a pending or actual disaster or emergency situation;
- Participate in drills to exercise these procedures and actions on a regular basis;
- Participate in honest appraisals of the performance of the firefighting role and actions after each drill, exercise and actual activation of the McCreary County EOC;
- Participate in a continuous quality improvement process that uses the findings of the performance appraisals and the lessons learned to continuously refine the role and actions of this emergency support function in the overall functioning of the McCreary County EOC and incorporate these into clearly written procedures which are shared with all staff and involved agencies;
- Deploy a representative to the EOC to assist with firefighting activities;
- Provide on-going status reports as requested by the Firefighting Coordinator;
- Document all costs and expenses associated with response and recovery activities taking care to clearly separate disaster-related work from daily work in the event that State and Federal reimbursement becomes available;
- Maintain up-to-date rosters for notifying personnel and 24-hour EOC staffing capabilities, and provide this information to the McCreary County Emergency Management Agency;
- Perform other emergency responsibilities as assigned.

Primary Agencies: Whitley City Fire Protection District
North McCreary Fire District
Eagle/Sawyer Fire District
West McCreary Fire District
South McCreary Fire District

Duties include but are not limited to the following:

- Provide first line response for fires and other major disasters requiring trained personnel and equipment;
- Provide leadership in directing, coordinating and integrating overall McCreary County to efforts to provide fire service assistance to affected areas and populations;
- Staff and operate a National Incident Management System compliant, command and control structure (i.e., Incident Command System), to assure that services and staff are provided to areas of need;

- Coordinate and direct the activation and deployment of urban and suburban fire agencies' personnel, supplies and equipment and provide certain direct resources;
- ESF-4/Firefighting representatives/designees jointly evaluate the emergency, make strategic decisions, identify resource needs and secure resources required for field operations;
- Task support agencies as necessary to accomplish ESF-4/Firefighting support responsibilities;
- Monitor firefighting emergency response and recovery operations. ESF-4 Incident Commanders or designees will coordinate all state and federal firefighting resources into the affected areas from Staging Areas;
- Manage firefighting and other emergency incidents in accordance with each department's Standard Operating Guidelines and under the direction of ESF-4/Firefighting representatives or designee;
- Requests firefighting assistance to the State ESF-4/comparable as needed. The State will activate resources through the State Emergency Response Plan;
- Re-assess priorities and strategies throughout the emergency according to the most critical fire service needs;
- Assist with emergency evacuations and re-entry of threatened areas;
- Demobilize resources and deactivate the ESF-4/Firefighting function upon direction from the EOC Manager.

Support Agencies:

Support agencies will assist the Emergency Support Function with:

- Performing the above-outlined tasks as requested by the ESF Coordinator;
- Services, staff, equipment, and supplies that complement the entire emergency response effort
- Reporting current resources capabilities on a regular basis.

Administration and Support

Support

Requests for emergency firefighting assistance will be resolved at the lowest level direction and control facility with appropriate response resources capabilities. Unresolved assistance requests will normally flow upward from McCreary County to the McCreary County EOC and/or field deployed command posts to responsible representatives in the State Emergency Operations Center, and as required to other states or the federal government for assistance support.

Agreements and Understandings

All agreements and understandings entered into for the purchase, lease, or otherwise use of equipment and services, will be in accordance with the provision of laws and procedures.

Status Reports

The primary agency will maintain status of all outstanding assistance requests and unresolved ESF-4/Firefighting related issues. This information will be summarized into periodic status reports and submitted in accordance with applicable operating procedures.

Expenditures and Recordkeeping

Each ESF-4/Firefighting agency is responsible for establishing administrative controls necessary to manage the expenditure of funds and to provide reasonable accountability and justification for federal reimbursement in accordance with the established guidelines. The first source of funds for expenditures by agencies in response to emergency, imminent disaster, or recovery from a catastrophic incident, is to be from funds associated with each local agency.

ESF-4/Firefighting is responsible for managing financial matters specific to ESF-4 activity and related to resources procured/used during an event and forwarding that information to the Finance/Administration Section. However, each local government/agency/department must also track and record its own expenditures to ensure accuracy with any submissions for potential reimbursement. Information will be provided post-event as to application procedures for reimbursement.

The Finance/Administration Section will coordinate with the Logistics Section to ensure that procurements and staff hours are properly documented and processed for potential reimbursement. It will also be responsible for follow-up on all financial issues through coordination with McCreary County Government and other local governments' fiscal and personnel management officials, Kentucky Division of Emergency Management fiscal agents, Federal Emergency Management Agency fiscal agents and directly with vendors as necessary.

Expenditures by other departments for activity not directly related to ESF-4/Firefighting will be documented by those entities and submitted directly to the Finance/Administration Section as soon as possible.

Critiques

Following the conclusion of any significant emergency, incident, or exercise, the primary agency representative will facilitate a critique of the group activities during the emergency/incident/exercise with the ESF-4/Firefighting agencies, identifying the successes and identifying areas that can be strengthened and enhanced for efficiency in a continuous quality improvement process.

Statement of Concurrence
FIREFIGHTING
ESF-4

The signature appearing below indicates the individual has the authority to commit resources of the agency represented and agrees to the functions and tasks prescribed for this ESF.

Primary Agencies: Whitley City Fire Protection District
North McCreary Fire District
Eagle/Sawyer Fire District
West McCreary Fire District
South McCreary Fire District

Kenneth A. Keith Kenneth A Keith 10-30-12
(Signature) (Printed Name) (Date)

Eulis Spradlin Eulis Spradlin 11-21-12
(Signature) (Printed Name) (Date)

Mark Coffey Mark Coffey 11-24-12
(Signature) (Printed Name) (Date)

Greg Chaney Greg Chaney 11-26-12
(Signature) (Printed Name) (Date)

Tony Miller Tony Miller 11-26-12
(Signature) (Printed Name) (Date)

