

**McCREARY COUNTY, KENTUCKY
EMERGENCY OPERATIONS PLAN**



AGRICULTURE

ESF-11

Coordinates and organizes agriculture resources in preparing for, responding to and recovering from emergency/disaster incidents which impact the citizens of McCreary County

AGRICULTURE

ESF-11

ESF Coordinator: McCreary County Agriculture and Natural Resource Agent
McCreary County Extension Office

Primary Agency: McCreary County Extension Office

Support Agencies: **McCreary County Fiscal Court**
McCreary County Judge Executive and Magistrates
McCreary County Sheriff's Office
McCreary County Emergency Management Agency
McCreary County Road Department
McCreary County EMS
McCreary County Animal Control
McCreary County Parks and Recreation Department
McCreary Fire Departments
McCreary County Water Department

Other Local Agencies

McCreary County Public Schools
Lake Cumberland District Health Department
American Red Cross- Lake Cumberland Area Chapter
Volunteer Organizations Active in Disasters

State Agencies

Kentucky State Police
Kentucky Motor Vehicle Enforcement
Kentucky Department of Transportation
Kentucky Division of Emergency Management

Purpose

The Agriculture Emergency Support Function (ESF-11)-

- Identifies and organizes the resources (human, technical, equipment, facility, materials and/or supplies) available to McCreary County to address and support agriculture needs in the event of either a natural or man-made disaster or emergency situation;

- Identifies the responsibilities of organizations charged with providing agriculture in the case of a disaster or emergency situation;
- Is established to assure the provision of agriculture support to County and private-sector response before, during and after an incident/event;
- Provides personnel and resources to support prevention, preparedness, protection, response, recovery and mitigation in support of the primary emergency management objectives of agriculture in emergency and disaster situations.

Mission

The mission of the agriculture Emergency Support Function is to coordinate and organize agriculture resources in preparing for, responding to and recovering from emergency/disaster incidents which impact the citizens of McCreary County.

Scope

The scope of this ESF includes:

- Assessing agriculture system damage and determining the required resources to restore such agriculture systems;
- Coordinating with ESF-11/Agriculture support agencies for assistance in helping agriculture suppliers obtain information, equipment, specialized labor, fuel and transportation to repair or restore energy systems;
- Coordinating information with local, state, and federal officials and suppliers about available agriculture supply recovery assistance;
- Providing technical assistance concerning agriculture systems;
- Ensuring the safety and security of the county's agricultural market (crop, livestock production, transportation and processing);
- Ensuring that animal and veterinary issues in natural disasters are supported
- Providing guidance for dealing with animals impacted by disaster or disease.

ESF-11/Agriculture is a functional annex to the McCreary County Kentucky Emergency Operations Plan and, to the extent possible, information contained in other sections of the EOP will not be repeated in this ESF annex. Many of the agencies involved in ESF-11/Agriculture activities have existing emergency plans and procedures which this ESF Annex is designed to complement and support.

This Emergency Support Function applies to all agencies with assigned agriculture emergency responsibilities as described in the McCreary County Kentucky Emergency Operations Plan.

Situations and Assumptions

ESF-11 readiness planning is guided by the following assumptions:

Common Activities

- The direct impact on productivity, exporting animal products, feeding of animals (pets, livestock and wildlife), sheltering of animals and medical care for domestic animals could be such that outside assist will need to be requested;
- Located within the county are veterinary resources, humane societies, wildlife experts, industry representatives, and/or animal care providers who can assist in the care of injured animals and the disposal of dead animals;
- Care of domestic animals shall be a joint governmental and non-governmental effort;
- Wildlife emergencies will be handled by Fish and Wildlife;
- It is possible that response procedures will extend across county lines, (counties that border other states) requiring intrastate/interstate coordination;
- Response efforts could encompass the culling of livestock and wildlife;
- Many chemicals have the potential for causing harmful effects to humans and animal health;

Disaster

- Large-scale disasters, such as severe droughts, floods, ice, and snow storms will injure, kill, and displace animals. These animals may be pets, livestock, and wildlife;
- Crop productivity, harvesting, monitoring, and exporting could be directly impacted by large-scale disasters;
- Acts of terrorism may be directed at the nation's food supply, livestock herds, or poultry flocks, either as the target or as a vehicle for weapons of mass destruction;
- Animals that are displaced due to severe flooding, ice/snow storms, animal and plant diseases and cut off from food supplies could be of such number that euthanizing and disposal procedures may become necessary;
- Chemical accidents present features that differ from emergencies, such as drought, floods, etc.

Disease

- The agricultural industry in Kentucky is a major contributor to the economy of the Commonwealth, the nation, and the world;
- An outbreak of a disease that impacts the agricultural community could result in economic losses of unprecedented scale;
- Tobacco, as well as many other crops, is grown within the state. These crops are all vulnerable and potential targets of disease or contamination, either through natural or accidental introduction, or through terrorist attack;
- McCreary County must be ready to effectively respond and control an outbreak of communicable disease or other conditions affecting agriculture, livestock, poultry, wildlife, exotic and companion animals, including but not limited to environmental emergencies or natural disasters;

- People, animals or materials can bring pathogens into contact with a susceptible host and spread the disease. The pathogen must be quickly and effectively controlled. Prevention measures at all levels must be addressed;
- Animal disease emergency detected anywhere in the United States puts the country's entire agricultural community at risk;
- There is the potential for animal pathogens and the threat of disease to be used for terrorism;
- Response efforts could encompass the culling of livestock and wildlife;
- Effective eradication requires extraordinary resources and cooperation of all local agencies, to minimize the impact on the agricultural industry and commerce. Eradication will require proper sanitary and disposal procedures for carcasses;
- Vector control could include discarding organic and inorganic matter, in any form, that is located on the site of positive detection;
- Suspected infected facilities and transport vehicles will need to be cleaned and disinfected;
- Areas where suspected or confirmed cases originate will require special operational procedures and quarantine areas.

Concept of Operations

The McCreary County Emergency Operations Center (EOC) serves as the central location for interagency coordination and executive decision-making, including all activities associated with ESF-11-Agriculture during a disaster/emergency event. The ESF-11 Primary Agencies work with the EOC management team to ensure necessary agriculture tasks are accomplished. The Support and Partnering Agencies provide resources and personnel to assist in accomplishing ESF-11/Agriculture activities as required by the size and demands of the event. As calls are received requesting services and resources during an emergency/disaster situation, they are routed to the ESF-11/Agriculture desk to determine appropriate action.

General

ESF-11/Agriculture is organized consistent with the requirements of the National Response Plan, the National Incident Management System and uses the Incident Command System (composed of Planning, Operations, Logistics and Finance/Administration Sections with their standardized Units, Teams, positions, forms and terminology) to manage its emergency/disaster responsibilities. This structure and system supports incident assessment, planning, procurement, deployment and coordination of agriculture support operations for McCreary County. Pursuant to the Incident Command System structure, the Planning, Logistics, Finance/Administration and Operations Section Coordinators and staff at the Emergency Operations Center (EOC) assist the EOC Manager in achieving the overall mission. Sections, Units, Teams, staffing levels, etc. are modular and scalable, depending on the type, size, scope and complexity of the emergency or disaster event.

Procedures, protocols and plans for agriculture disaster response activities provide guidelines for operations at the McCreary County Emergency Operations Center and in the field.

- The EOP and corresponding Appendices, Incident Annexes, Support Annexes and Standard Operating Guidelines that describe ESF-11/Agriculture capabilities are based on National

Planning Scenarios, Universal Task List and Target Capabilities and are the basis of these guidelines;

- Periodic training and exercises are conducted to enhance effectiveness;
- Agriculture planning is continuous, beginning well before impact of approaching natural disasters and immediately upon those not forecasted.

A large event requiring regional, state and/or interstate mutual aid assistance will require ESF-11/Agriculture implementation. ESF-11/Agriculture will coordinate with support agency counterparts to seek and procure, plan, coordinate and direct the use of any required agriculture assets.

When an event requires a specific type or response mode, agriculture technical and subject matter expertise may be provided by an appropriate person(s) from a supporting agency with skills relevant to the type of event. The individual will advise and/or direct operations within the context of the Incident Command System structure.

As illustrated in Figure 11-1: *ESF-11/Agriculture Concept of Operation*, ESF-11 will give priority to five fundamental, interrelated functions:

- Use technology and human intelligence to collect, analyze and disseminate information on direct and indirect disaster impacts,
- Assess the capabilities of local government, the business community and volunteer agencies to effectively respond to the disaster;
- Assess and prioritize the immediate needs of impacted communities, neighborhoods and areas of the county;
- Incorporate the analyses into Incident Action Plans that establish operational objectives and identify resource requirements to accomplish these objectives;
- Utilize an Incident Action Matrix to establish priorities, assign tasks to agencies and track progress in meeting objectives.

Each agriculture organization which enters into a mutual aid agreement will furnish a copy of the agreement to the McCreary County Emergency Management Agency.

The McCreary County Emergency Management Agency will maintain up-to-date information of agriculture services in McCreary County including:

- Names of responsible officials (reviewed/updated annually),
- ESF-11/Agriculture staffing directory (reviewed/updated annually),
- ESF-11/Agriculture notification lists (reviewed/updated annually),
- Major agriculture equipment identified in Resource Typing and readiness status (reviewed/updated annually).

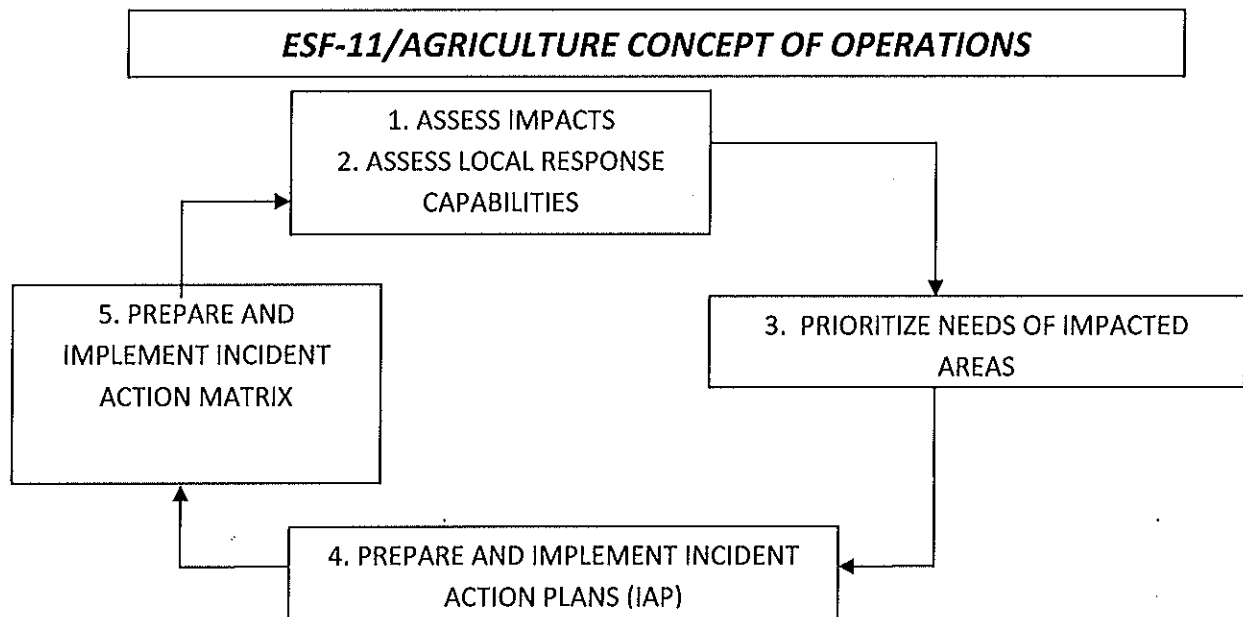


Figure 11-1: ESF-11/Agriculture Concept of Operation

The ESF-11/Agriculture Emergency Operations Plan plus accompanying Appendices, Annexes and Standard Operating guidelines are maintained by the McCreary County Emergency Management Agency and are reviewed and updated by the agriculture planning committee with the McCreary County Emergency Management Agency at least annually. Support agencies may develop and maintain their own similar documents for internal use, which must be compatible with and in support of the overall Emergency Operations Plan. All such documents must be compliant with the National Response Plan, National Incident Management System, Incident Command System and the Emergency Operations Plan (EOP).

Agriculture organizations are responsible for training and continuing education of their personnel.

The McCreary County Emergency Operations Center uses WebEOC (crisis management software) to supplement disaster management planning and actions. Specifically, all of the applicable Emergency Support Functions, agency based emergency operations centers, and other facilities or functions as appropriate are able to communicate their needs and status through WebEOC. This allows all of the information to be integrated for the specific event and to assess what actions, resources and needs exist.

Notifications

McCreary County 911 Dispatch is the county's 24 hour Warning Point.

When the county or an area of the county has been threatened or impacted by an emergency or disaster event, McCreary County 911 Dispatch will notify the McCreary County Emergency Management Agency Director who in turn will notify the State Emergency Operations Center Duty Officer. The state Emergency Operations Center notifies applicable state agencies including the Regional Response Manager of KyEM Region 10.

ESF-11/Agriculture will be activated or placed on standby upon notification by the McCreary County Emergency Management Agency. Upon instructions to activate this Emergency Support Function, the ESF-11 Coordinator and Support Agencies will implement their procedures to notify and mobilize all personnel, facilities and physical resources potentially needed, based on the emergency circumstance.

Direction and Control

McCreary County Extension Office is the lead agency for ESF-11 and will manage the emergency activities of ESF-11/Agriculture. ESF-11/Agriculture operates from the McCreary County Emergency Operations Center (EOC) on a 24 hour/7 days a week schedule to help maintain the flow of agriculture services.

The McCreary County Emergency Management Agency functions as the official disaster organization for preparedness, mitigation, response and recovery within McCreary County and serves as the focal point for ESF-11 activities. It is responsible for ensuring that all appropriate program departments, support agencies, other Emergency Support Functions and private voluntary agencies have knowledge about the system and ESF-11/Agriculture expectations.

The ESF-11/Agriculture system operates at two levels – the Emergency Operations Center and field operations.

All management decisions regarding county and/or regional resource allocation are made at the Emergency Operations Center by the ESF-11 Coordinator during emergency activations. In accordance with a mission assignment from ESF-11/Agriculture and further mission tasking by a local primary agency, each support organization assisting in an ESF-11 assignment will retain administrative control over its own resources and personnel but will be under the operational control of ESF-11. Delegation of mission operational control may be delegated to a management Support Unit, Multi-Agency Coordination Team or a local entity.

Organization

Response to an emergency/disaster event in McCreary County is progressive as demonstrated in Figure 11- 2: *Progressive Requests for Emergency/Disaster Resources*. The initial response to an emergency/disaster situation is met by the use of the agriculture resources available at the local level. McCreary County Fiscal Court activates available resources. When the agriculture needs for resources and/or services exceed the capability of what is available in the jurisdictions within McCreary County, established mutual aid agreements with surrounding counties to provide agriculture, such resources are utilized. When needed agriculture resources cannot be located through mutual aid agreements, the McCreary County Emergency Operations Center requests resources through the state Emergency Operations Center. The state Emergency Operations Center locates resources through intra- and inter-state mutual aid agreements and federal assets.

Requests for Emergency Assistance Flow Upwards from the Lowest Level

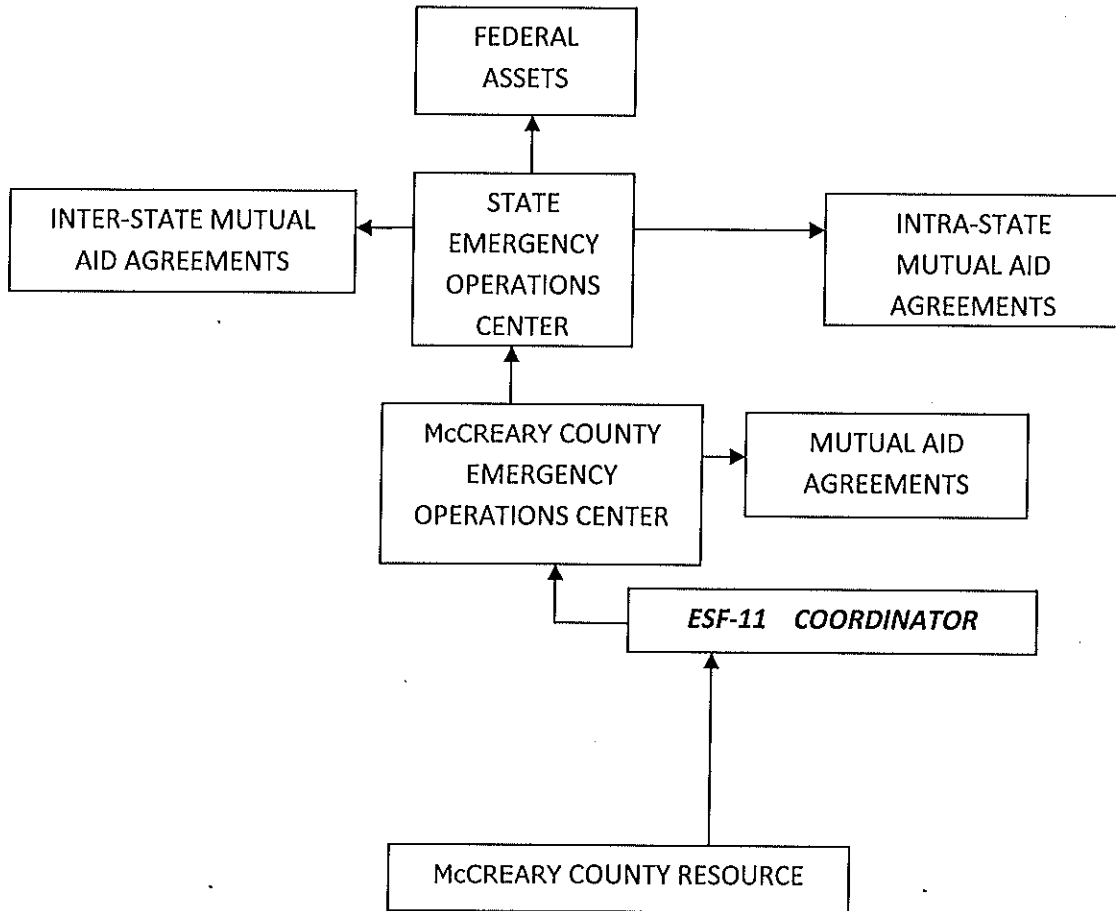


Figure 11-2: Progressive Requests for Emergency/Disaster Resources

County

McCreary County Emergency Management will initiate ESF-11/Agriculture notification and will request assistance from the primary and support agencies to help staff the ESF-11 position in the McCreary County Emergency Operations Center.

In the Incident Command Structure, ESF-11/Agriculture is located in the Operations Section as shown in Figure 11-3: *Incident Command System Structure: ESF-11/Agriculture*.

During an activation of the EOC, support agency staff is integrated with the agriculture staff to provide support that will allow for an appropriate, coordinated and timely response.

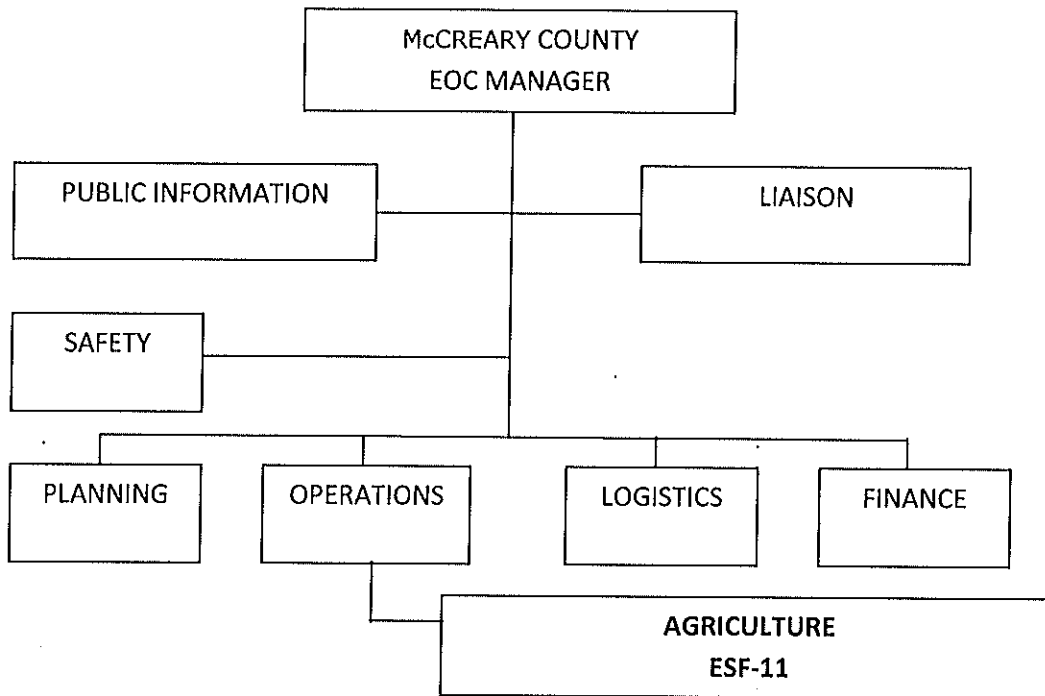


Figure 11-3: Incident Command System Structure: ESF-11/AGRICULTURE

Throughout the response and recovery periods, ESF-11:

- Collects, analyzes, and disseminates tactical information on the nature, scope and potential impacts of an incident or major disaster related to agriculture;
- Evaluates and analyzes information regarding agriculture requests;
- Develops and updates assessments of current and anticipated future agriculture needs and resource requirements,
- Implements contingency planning to meet anticipated agriculture demands or needs;
- Incorporates this analysis into Incident Action Plans; and
- Uses this intelligence to support the Logistics, Operations and other ESFs in their impact assessment and response missions.

Region

When local resources are overwhelmed or depleted, additional agriculture resources are obtained through established mutual aid agreements McCreary County has with counties in the region. The Operations Chief, in consultation with the requesting jurisdiction, contacts the agencies with whom mutual agreements are in effect to determine if the requested resources are available.

Additionally, either the KyEM Region 10 Response Manager or the state Emergency Operations center can be contacted to determine the appropriate state agency serving as the lead agency for agriculture

coordination/support at the state level. That agency can designate a liaison to the McCreary County EOC to assist Emergency Support Function 11 and to the extent capable provide coordinators, assessors and operational personnel in support of the EOC or field activities.

On activation of an emergency operations center in more than one county, the lead agency for agriculture coordination/support at the state level may support the coordination of the event response with regional resources or request additional resources through the State EOC.

State

During an emergency or disaster event, ESF-11/comparable primary and support agencies at the State Emergency Operations Center report and function under the overall direction of the Kentucky Division of Emergency Management Director.

During the response phase, ESF-11/Agriculture evaluates and analyzes information regarding agriculture requests. ESF-11/Agriculture also develops and updates assessments of the agriculture situation/status in the impact area and initiate contingency planning to meet anticipated demands and needs.

The Kentucky Division of Emergency Management develops and maintains the overall State Emergency Operations Plan and accompanying Appendices and Standard Operating Guidelines that govern response actions related to emergencies. Support agencies may develop and maintain their own similar documents for internal use, which must be compatible with and in support of the overall Emergency Operations Plan. All such documents will comply with the National Response Plan, the National Incident Management System and the Incident Command System.

Actions

Actions initiated by ESF-11 are grouped into the phases of emergency management: preparation, mitigation, response and recovery. Each phase requires specific skills and knowledge to accomplish. Each phase requires significant cooperation and collaboration between all supporting agencies and the intended recipients of service. ESF-11 encompasses a full range of activities from training to the provision of field services.

ESF-11 also coordinates and may assume direct operational control of the following functional areas:

- Assistance to emergency response teams with animal-related problems;
- Coordination for animal services and or support agencies to transport animals as needed, during and after disasters;
- Assistance in coordination of any sites of animal needs stations to be set up in the McCreary County area;
- Coordination of appropriate equipment and resources for pre-and post-disaster sheltering and rescue of horses and farm animals;
- Coordination of any field mutual aid from supporting agencies for emergency care to all injured animals;
- Coordination of any needs of local or support agencies for disposal for animal carcasses to include massive numbers;

- Release of public information through ESF 15 to the general public regarding such issues as quarantine areas, zoonotic issues alert and public service information announcements.

Preparedness Actions

Actions and activities that develop animal services response capabilities may include planning, training, orientation sessions, and exercises for ESF-11/Agriculture personnel and other emergency support functions that will respond with ESF-11.

Local agencies will jointly address planning issues on an on-going basis to identify response zones, potential staging areas and potential veterinary facilities.

Initiatives also include the following:

- Planning with ESF-11 support agencies and other emergency support functions to refine animal services operations;
- Conducting training and exercises for EOC and Animal Services response team members;
- Delivering preparedness programs that address small pet issues. The McCreary County Extension Service will coordinate preparedness and response measures that address livestock or other large animals;
- Ensuring lead agency personnel are trained in their responsibilities and duties;
- Promoting awareness of animal protection through a United States Department of Homeland Security public education brochure entitled "Preparing your Pets for Emergencies Makes Sense - Get Ready Now" and other mediums as appropriate.

Common Activities

- Developing mutual aid agreements with government agencies, professional associations, and private agencies and organizations;
- Developing agricultural operating procedures, organizational structure and recruit needed personnel;
- Developing a system of determining availability and need of manpower, equipment, and other resources and develop alternate sources of notification;
- Carrying out a training program for the appropriate type of organization(s), such as County Agriculture Response Team (CART), if one is established in your county, and take part in tests and exercises;
- Refining and exercising preplanned protective measures relative to the county's crop, livestock, and poultry industry.

Disaster Activities

- Coordinating efforts to rescue and capture animals including relocation and sheltering before an incident/disaster. McCreary County will need to identify available barns, pastures, kennels, etc., with local agencies and volunteer organizations;

McCREARY COUNTY EMERGENCY OPERATIONS PLAN

- Coordinating with local agencies to establish a system to register identification data in an effort to reunite animals with their owners when separated during an incident/disaster;
- Coordinating the storage of emergency relief supplies and their distribution to animal caretakers/shelters;

Disease Activities

- Coordinating a system for assignment of personnel and equipment to distribute supplies and equipment needed into infected areas;
- Coordinating location(s) to be confinement areas or areas to be quarantined due to infectious animal or plant diseases to help prevent the spread to other areas;
- Coordinating a system for tracking of activities based on information provided by personnel located by confinement areas or quarantine locations.

Response Actions

Response actions/initiatives include:

- Identifying, mobilizing and deploying assessment representatives to the disaster area(s) to determine the specific animal service needs and priorities;
- ESF-11 will coordinate with other Emergency Support Functions represented at the EOC to provide support to aid in the relief of nuisance and health-related problems involving animals and their impact on human relief efforts;
- During this phase, animal-related services will become more generalized:
 - ESF-11 will proceed with assistance on a limited basis and participate with damage assessment teams.
 - Additionally, due to the complexity of injured, dead and nuisance animal problems, conditions may require special expert advisory groups;
 - ESF-11 will coordinate advice from subject matter experts and will determine specific strategies to manage and respond to these situations.
- The responsibility for providing safe shelter for animals lies with the owner. Owners who must evacuate are encouraged to make arrangements ahead of time for pet evacuation and are advised of the following options:
 - Stay with friends or family members in a safe area;
 - Make reservations in lodgings which will accept pets;
 - Make arrangements to board animals at a kennel or a veterinarian's office;
 - Relocate larger animals to open pasture areas.
- Pet disaster information is available at the following website: www.protectyourfamily.ky.gov.

Common Activities

McCREARY COUNTY EMERGENCY OPERATIONS PLAN

- Coordinate CART Teams for the care and disposal of domestic animals;
- Coordinate emergency medical care for all animals, including commercial livestock, poultry, fish, and exhibition (racing) animals; and domestic pets;
- Increase surveillance of critical locations (i.e., auction markets, confinement markets, slaughter plants and free-range operations);
- Take additional precautions at public events where animals are displayed and/or markets and possibly consider alternate venues or cancellation;
- Keep records of workers available, work undertaken, and hours worked.

Disaster Activities

- Track the activities of all available animal shelter facilities and confinement areas identified before, during, and after the incident/disaster;
- Coordinate evacuation of livestock during a disaster/incident to emergency shelters and coordinate efforts to provide water, food, and other physical needs to livestock/wildlife being sheltered.

Disease Activities

- Coordinate animal care, euthanasia of injured animals and disposal of dead animals;
- Disposal methods for infected or potentially infected carcasses and plant host material are chosen for their minimal impact on the environment and disease control.

Recovery Actions

- Provide continued care of sheltered animals and an extended network for the adoption of unclaimed animals;
- Assist in the relocation of sick and injured animals to permanent facilities until a return to normal operations;
- Coordinate with other Emergency Support Functions represented at the EOC to provide support to aid in the relief of nuisance and health-related problems involving animals and their impact on human relief efforts;
- Continue to provide assistance in the following areas: capture of injured and displaced animals, sheltering, medical care, feeding, relocation and reunification with owners, acquisition of additional food and supplies from vendors to support the relief efforts, continued coordination with other ESFs for timely and proper carcass disposal;
- Address long-term animal issues to include the return of animals to their owners or natural environment, long-term health recovery, and proper disposal of carcasses with the aid of ESF-3/Public Works-Infrastructure Management.

Common Activities

- Coordinate CARTs and other local emergency response teams within the county, and with the statewide support network and the SART;

McCREARY COUNTY EMERGENCY OPERATIONS PLAN

- Coordinate damage assessment and restore equipment and supplies to normal operational readiness as soon as feasible.

Disaster Activities

- Manage crisis response and resulting consequences, and cooperate with law enforcement officials in criminal investigations, if a terrorist act is suspected in connection with agricultural incidents;
- Coordinate the security of supplies, equipment, personnel, and other resources to carry out the recovery plans associated animal health emergency management and/or any act of agro-terrorism that may pose a substantial threat to the county.

Disease Activities

- Coordinate decontamination and/or destruction of animals, plants; and their associated facilities as deemed necessary.

Mitigation Actions

- Develop and deliver guidance for farmers and owners of livestock on measures that can be taken to reduce losses from scenario disaster events;
- Develop and deliver guidance for pet owners on measures that can be taken to reduce losses from scenario disaster events.

Responsibilities

All tasked agencies will:

- Develop applicable standard operating procedures, guidelines and/or checklists which clearly define the role of this emergency support function in the overall functioning of the McCreary County EOC and detail the accomplishment of their assigned functions;
- Train staff in the standard operating procedures, guidelines and/or checklists that outline the courses of action to be taken during a pending or actual disaster or emergency situation;
- Participate in drills to exercise these procedures and actions on a regular basis;
- Participate in honest appraisals of the performance of the Communications role and actions after each drill, exercise and actual activation of the McCreary County EOC;
- Participate in a continuous quality improvement process that uses the findings of the performance appraisals and the lessons learned to continuously refine the role and actions of this emergency support function in the overall functioning of the McCreary County EOC and incorporate these into clearly written procedures which are shared with all staff and involved agencies;
- Deploy a representative to the EOC to assist with emergency management activities;
- Provide on-going status reports as requested by the Emergency Management Coordinator;

McCREARY COUNTY EMERGENCY OPERATIONS PLAN

- Document all costs and expenses associated with response and recovery activities taking care to clearly separate disaster-related work from daily work in the event that State and Federal reimbursement becomes available;
- Maintain up-to-date rosters for notifying personnel and 24-hour EOC staffing capabilities, and provide this information to the McCreary County Emergency Management Agency;
- Perform other emergency responsibilities as assigned.

Primary Agency: McCreary County Extension Office

Duties include:

- Providing leadership in directing, coordinating and integrating overall McCreary County efforts to provide animal service to affected areas;
- Staffing and operating a National Incident Management system compliant command and control structure (i.e., Incident Command System) to assure that services and staff are provided to areas of need;
- Coordinating and directing the activation and deployment of McCreary County animal services agencies, service personnel, supplies, and equipment and provide certain direct resources;
- Evaluating the emergency situation, make strategic decisions, identify resource needs and secure resources required for field operations;
- Coordinating supplemental assistance in identifying and meeting the needs of animals during a disaster;
- Implementing the organization, assignment and staffing at the facilities in which ESF 11 requires location;
- Investigating all animal bites;
- Facilitating the transportation of injured, stray or nuisance animals to animal care facilities;
- Coordinating with North Central District Health Department for the release of public information regarding animals and related health issues;
- Providing for the quarantine of bite animals for observation and impounding of animals roaming at large;
- Euthanizing sick and/or injured animals through assigned and authorized personnel;
- Returning wild animals to their natural environment;
- Responding to animal-related inquires;
- Investigating animal cruelty and neglect complaints;
- Coordinating surveillance of plant pest of unknown or questionable origin which may pose a potential or substantial threat to agriculture, horticulture, economy or public health;

- Assisting in monitoring and reporting environmental hazards.

Support Agencies

Support agencies will provide assistance to the Emergency Support Function with services, staff, equipment and supplies that complement the entire emergency response effort as the Emergency Operations Center addresses the consequences generated by the hazards that may affect the county (i.e., severe weather, earthquake, environmental, biological and/or terrorism). Services and resources are subject to change. Emergency coordinators are responsible for frequently updating their resources capabilities with the ESF-11.

General responsibilities include:

- Notifying, activating and mobilizing all personnel and equipment to perform or support assigned functions;
- Designating and assigning personnel for staffing of all facilities at which this ESF is required, and provide representation when it is determined by the primary agency of this ESF to be necessary;
- Coordinating all actions of the support agency with the primary agency when performing the assigned missions of the ESF;
- Identify all personnel and resource requirements to perform assigned missions which are in excess of the support agencies' capabilities;
- Ensure that procedures are developed for surveillance and response to pests of crops and horticulture. These procedures will relate to catastrophic disaster and disease that pose a significant impact on human life, property or the economy;
- Providing personnel to conduct product tracing to determine the source, destination and disposition of adulterated and/or contaminated products;

When requested, the Kentucky State Agriculture Response Team (SART) can provide agriculture/animal relief response and recovery efforts. (The SART was developed to augment response and recovery efforts for incidents involving agriculture/animals in any part of the state).

Administration and Support

Support

Requests for emergency assistance will be resolved at the lowest level direction and control facility with appropriate response resources capabilities. Unresolved assistance requests will normally flow upward from cities to the county and/or field deployed command posts to responsible representatives in the State Emergency Operations Center, and as required to other states or the federal government for assistance support.

Agreements and Understandings

All agreements and understandings entered into for the purchase, lease, or otherwise use of equipment and services, will be in accordance with the provision of laws and procedures.

Status Reports

The primary agency will maintain status of all outstanding assistance requests and unresolved ESF-11 related issues. This information will be summarized into periodic status reports and submitted in accordance with applicable operating procedures.

Expenditures and Recordkeeping

Each ESF-11 agency is responsible for establishing administrative controls necessary to manage the expenditure of funds and to provide reasonable accountability and justification for federal reimbursement in accordance with the established guidelines. The first source of funds for expenditures by agencies in response to emergency, imminent disaster, or recovery from a catastrophic incident, is to be from funds associated with each local agency.

ESF-11 is responsible for managing financial matters (specific to ESF 1 activity) related to resources procured/used during an event and forwarding that information to the Finance/Administration Section. However, each local government/agency/department must also track and record its own expenditures to ensure accuracy with any submissions for potential reimbursement. Information will be provided post-event as to application procedures for reimbursement.

The Finance/Administration Section will coordinate with the Logistics Section to ensure that procurements and staff hours are properly documented and processed for potential reimbursement. It will also be responsible for follow-up on all financial issues via coordination with McCreary County Government and other local governments' fiscal and personnel management officials, Kentucky Division of Emergency Management fiscal agents, Federal Emergency Management Agency fiscal agents and directly with vendors as necessary.

Expenditures by other departments for activity not directly related to ESF 1 will be documented by those entities and submitted directly to the Finance/Administration Section as soon as possible.

After Action

Following the conclusion of any significant emergency, incident or exercise, the primary agency representative will facilitate a critique of the group activities during the emergency/incident/exercise with the ESF 1 agencies, identifying the successes and identifying areas that can be strengthened and enhanced for efficiency.

Statement of Concurrence
AGRICULTURE **ESF-11**

The signature appearing below indicates the individual has the authority to commit resources of the agency represented and agrees to the functions and tasks prescribed for this ESF.

PRIMARY AGENCY: McCreary County Extension Office

Greg White Grag Whitis 11/13/12
(Signature) (Printed Name) (Date)