

**McCREARY COUNTY, KENTUCKY
EMERGENCY OPERATIONS PLAN**



HAZARDOUS MATERIALS

ESF-10

*Coordinates and organizes hazardous materials resources
in preparing for, responding to and recovering from
emergency/disaster incidents which impact the citizens of
McCreary County.*

HAZARDOUS MATERIALS

ESF-10

ESF Coordinator: Pulaski County SRT/KY Haz-Mat 12

Primary Agencies: Pulaski County SRT/KY Haz-Mat 12
McCreary County Emergency Management

Support Agencies: **McCreary County Fiscal Court**
McCreary County Judge Executive and Magistrates
McCreary County Emergency Management Agency
McCreary County EMS
McCreary Fire Departments

Other Local Agencies

Lake Cumberland District Health Department
American Red Cross- Lake Cumberland Area Chapter

State Agencies

Kentucky Division of Emergency Management
Kentucky Environmental Protection Cabinet
Kentucky State Fire Marshal

Introduction

The Hazardous Materials Emergency Support Function (ESF-10):

- Identifies and organizes the resources (human, technical, equipment, facility, materials and/or supplies) available to McCreary County to address and support ESF-10/Hazardous Materials needs in the event of either a natural or man-made disaster or emergency situation;
- Identifies the responsibilities of organizations charged with providing hazardous materials response in the case of a disaster or emergency situation;
- Is established to assure the provision of ESF-10/Hazardous Materials response and support to McCreary County and private-sector response before, during and after an incident/event;
- Provides personnel and resources to support prevention, preparedness, protection, response, recovery and mitigation in support of the primary emergency management objectives of ESF-10/Hazardous Materials response in emergency and disaster situations.

The necessity of ESF-10/Hazardous Materials is based on the following:

- Potentially dangerous materials are manufactured, stored and transported throughout McCreary County;
- US TOC, the KYTOC Highway and other highways, railroad networks, airports and pipelines in and around McCreary County are major shipping routes with constant potential for an incident involving hazardous materials;
- In McCreary County two facilities have reported to the State Emergency Response Commission and the McCreary County Emergency Planning Committee that they manufactured, stored, or

used one or more of the substances covered in Section 302, Title III of Public Law 99-499, Emergency Planning and Community Right-To-Know Act of SARA;

- Local government is responsible for safety measures or precautions that may be required for public protection until a hazardous situation has been corrected.

The responsibility for safeguards relating to hazardous materials belongs to the party having custody, such as the plant where it is stored and used or the carrier providing the transport. Companies or individuals doing business in McCreary County have responsibilities under one or more of the following regulatory directives:

- Hazardous Materials Ordinance;
- Public Law 99-499, October 17, 1986;
- SARA Title III, Emergency Planning and Community Right-To-Know;
- Comprehensive Environmental Response Compensation and Liability Act (CERCLA) of 1980;
- Superfund Amendment and Reauthorization Act of 1986 (SARA);
- National Incident Management System (NIMS)

Mission

The mission of the Hazardous Materials Emergency Support Function is to coordinate and organize hazardous materials resources in preparing for, responding to and recovering from emergency/disaster incidents which impact the citizens of McCreary County.

Scope

The scope of this ESF includes:

- Assessing hazardous materials system damage and determining the required resources to restore such hazardous materials systems;
- Coordinating with ESF-10/Hazardous Materials support agencies for assistance in helping hazardous materials suppliers obtain information, equipment, specialized labor, fuel and transportation;
- Coordinating information with local, state, and federal officials and suppliers about available hazardous materials supply recovery assistance;
- Providing technical assistance concerning hazardous materials systems.

ESF-10/Hazardous Materials is a functional annex to the McCreary County Kentucky Emergency Operations Plan (EOP) and, to the extent possible, information contained in other sections of the EOP will not be repeated in this ESF annex. Many of the agencies involved in ESF-10/Hazardous Materials activities have existing emergency plans and procedures which this ESF Annex is designed to complement and support.

This Emergency Support Function applies to all agencies with assigned hazardous materials emergency responsibilities as described in the McCreary County Kentucky EOP.

Situations and Assumptions

Situations and assumptions involved in planning ESF-10/Hazardous Materials planning include:

- Hazardous materials are produced, used, stored, and transported throughout the Commonwealth;
- Accidents or incidents involving hazardous materials are one of the most common emergencies in the Commonwealth of Kentucky;
- Hazardous material releases require swift and decisive emergency response action;
- All on-scene emergency response operations for oil or hazardous material incidents are conducted in accordance with the Incident Command System (ICS) described in the National Incident Management System (NIMS);
- Response to oil and hazardous materials incidents shall be executed in conformity with the Comprehensive Environmental Response, Compensation, and Liability Act (CERCLA) of 1980, the Superfund Amendments and Reauthorization Act of 1986, Section 311 of the Clean Water Act of 1972 as amended by the Oil Pollution Act of 1990, Kentucky Occupational Safety and Health Program (KY-OSH) regulations and the Kentucky Revised Statutes (KRS) 224 and 227 as they pertain to hazardous substances;
- Response to oil and hazardous substances discharges will be in accordance with the National Contingency Plan (40 CFR 300) and as authorized pursuant to KRS 224, delegating to the EPA the power and duty to control, prohibit, and respond to pollution of the air, water, and lands of the Commonwealth, and protect human health, safety, and the environment from the effects of hazardous substances;
- The majority of hazardous material incidents require coordination between state and local agencies;
 - In most incidents, state level involvement is limited until the scope of the disaster exceeds local government capabilities;
 - However, state level involvement may occur at any time since the state has certain jurisdictional responsibilities, complex federal and state statutes to enforce, and technical expertise that may not be available at the local level;
- ESF-10/Hazardous Materials will facilitate the coordination between responding local and state agencies and between these agencies and federal response agencies in the event that the involvement of the latter is required;
- All persons responding to hazardous materials incidents will respond only up to their highest level of OSHA 29 CFR 1910.120 (HAZWOPER) training.

Concept of Operations

The McCreary County Emergency Operations Center (EOC) serves as the central location for interagency coordination and executive decision-making, including all activities associated with ESF-10/Hazardous Materials during a disaster/emergency event. The ESF-10 Primary Agencies work with the EOC management team to ensure necessary hazardous materials tasks are accomplished. The

Support and Partnering Agencies provide resources and personnel to assist in accomplishing ESF-10/Hazardous Materials activities as required by the size and demands of the event. As calls are received requesting services and resources during an emergency/disaster situation, they are routed to the ESF-10/Hazardous Materials desk to determine appropriate action.

General

ESF-10/Hazardous Materials is organized consistent with the requirements of the National Response Plan, the National Incident Management System and uses the Incident Command System (composed of Planning, Operations, Logistics and Finance/Administration Sections with their standardized Units, Teams, positions, forms and terminology) to manage its emergency/disaster responsibilities. This structure and system supports incident assessment, planning, procurement, deployment and coordination of hazardous materials support operations for McCreary County. Pursuant to the Incident Command System structure, the Planning, Logistics, Finance/Administration and Operations Section Coordinators and staff at the Emergency Operations Center (EOC) assist the EOC Manager in achieving the overall mission. Sections, Units, Teams, staffing levels, etc. are modular and scalable, depending on the type, size, scope and complexity of the emergency or disaster event.

Procedures, protocols and plans for hazardous materials disaster response activities provide guidelines for operations at the McCreary County Emergency Operations Center and in the field.

- The Emergency Operations Plan and corresponding Appendices, Incident Annexes, Support Annexes and Standard Operating Guidelines that describe ESF-10/Hazardous Materials capabilities are based on National Planning Scenarios, Universal Task List and Target Capabilities and are the basis of these guidelines;
- Periodic training and exercises are conducted to enhance effectiveness;
- Hazardous materials response planning is continuous, beginning well before impact of approaching natural disasters and immediately upon those not forecasted.

A large event requiring regional, state and/or interstate mutual aid assistance will require ESF-10/Hazardous Materials implementation. ESF-10/Hazardous Materials will coordinate with support agency counterparts to seek and procure, plan, coordinate and direct the use of any required hazardous materials assets.

ESF-10/HAZARDOUS MATERIALS CONCEPT OF OPERATIONS

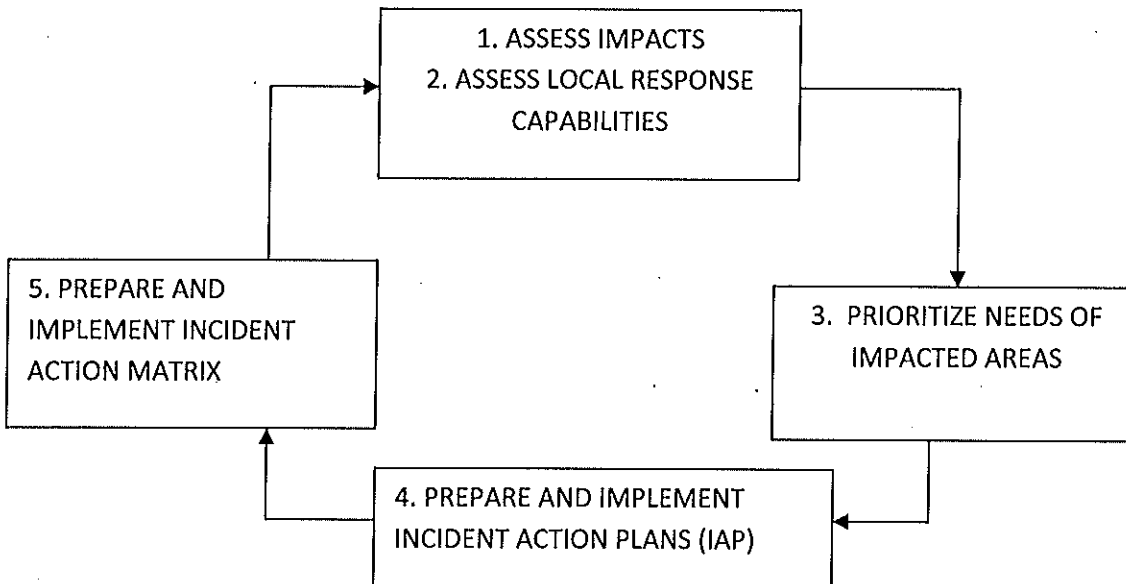


Figure 10-1: ESF-10/Hazardous Materials Concept of Operations

When an event requires a specific type or response mode, hazardous materials technical and subject matter expertise may be provided by an appropriate person(s) from a supporting agency with skills relevant to the type of event. The individual will advise and/or direct operations within the context of the Incident Command System structure.

As illustrated in Figure 10-1: *ESF-10/Hazardous Materials Concept of Operation*, ESF-10 will give priority to five fundamental, interrelated functions:

- Use technology and human intelligence to collect, analyze and disseminate information on direct and indirect disaster impacts,
- Assess the capabilities of local government, the business community and volunteer agencies to effectively respond to the disaster;
- Assess and prioritize the immediate needs of impacted communities, neighborhoods and areas of the county;
- Incorporate the analyses into Incident Action Plans that establish operational objectives and identify resource requirements to accomplish these objectives;
- Utilize an Incident Action Matrix to establish priorities, assign tasks to agencies and track progress in meeting objectives.

Each hazardous materials organization which enters into a mutual aid agreement will furnish a copy of the agreement to the McCreary County Emergency Management Agency.

The McCreary County Emergency Management Agency will maintain up-to-date information of hazardous materials services in McCreary County including:

- Names of responsible officials (reviewed/updated annually),
- ESF-10/Hazardous Materials staffing directory (reviewed/updated annually),
- ESF-10/Hazardous Materials notification lists (reviewed/updated annually),
- Major hazardous materials equipment identified in Resource Typing and readiness status (reviewed/updated annually).

The ESF-10/Hazardous Materials Emergency Operations Plan plus accompanying Appendices, Annexes and Standard Operating guidelines are maintained by the McCreary County Emergency Management Agency and are reviewed and updated by the hazardous materials planning committee with the McCreary County Emergency Management Agency at least annually. Support agencies may develop and maintain their own similar documents for internal use, which must be compatible with and in support of the overall Emergency Operations Plan. All such documents must be compliant with the National Response Plan, National Incident Management System, Incident Command System and the Emergency Operations Plan (EOP).

Hazardous materials organizations are responsible for training and continuing education of their personnel.

The McCreary County Emergency Operations Center uses WebEOC (crisis management software) to supplement disaster management planning and actions. Specifically, all of the applicable Emergency Support Functions, agency based emergency operations centers, and other facilities or functions as appropriate are able to communicate their needs and status through WebEOC. This allows all of the information to be integrated for the specific event and to assess what actions, resources and needs exist.

Notifications

McCreary County 911 Dispatch is the county's 24 hour Warning Point.

When the county or an area of the county has been threatened or impacted by an emergency or disaster event, McCreary County 911 Dispatch will notify the McCreary County Emergency Management Agency Director who in turn will notify the State Emergency Operations Center Duty Officer. The state Emergency Operations Center notifies applicable state agencies including the Regional Response Manager of KyEM Region 10.

ESF-10/Hazardous Materials will be activated or placed on standby upon notification by the McCreary County Emergency Management Agency. Upon instructions to activate this Emergency Support Function, the ESF-10/Hazardous Materials Coordinator and Support Agencies will implement their procedures to notify and mobilize all personnel, facilities and physical resources potentially needed, based on the emergency circumstance.

Direction and Control

Pulaski County SRT/KY HazMat 12 is the lead agency for ESF-10/Hazardous Materials and will manage the emergency activities of ESF-10. Hazardous Materials operates from the McCreary County

Emergency Operations Center (EOC) on a 24 hour/7 days a week schedule to help maintain the flow of hazardous materials services.

The McCreary County Emergency Management Agency functions as the official disaster organization for preparedness, mitigation, response and recovery within McCreary County and serves as the focal point for ESF-10/Hazardous Materials activities. It is responsible for ensuring that all appropriate program departments, support agencies, other Emergency Support Functions and private voluntary agencies have knowledge about the system and ESF-10/Hazardous Materials expectations.

The ESF-10/Hazardous Materials system operates at two levels – the Emergency Operations Center and field operations.

All management decisions regarding county and/or regional resource allocation are made at the Emergency Operations Center by the ESF-10/Hazardous Materials Coordinator during emergency activations. In accordance with a mission assignment from ESF-10-Hazardous materials and further mission tasking by a local primary agency, each support organization assisting in an ESF-10 assignment will retain administrative control over its own resources and personnel but will be under the operational control of ESF-10/Hazardous Materials. Delegation of mission operational control may be delegated to a management Support Unit, Multi-Agency Coordination Team or a local entity.

Organization

Response to an emergency/disaster event in McCreary County is progressive as demonstrated in Figure 10- 2: *Progressive Requests for Emergency/Disaster Resources*. The initial response to an emergency/disaster situation is met by the use of the hazardous materials resources available at the local level. McCreary County Fiscal Court activates available resources. When the hazardous materials needs for resources and/or services exceed the capability of what is available in the jurisdictions within McCreary County, established mutual aid agreements with surrounding counties to provide hazardous materials, such resources are utilized. When needed hazardous materials resources cannot be located through mutual aid agreements, the McCreary County Emergency Operations Center requests resources through the state Emergency Operations Center. The state Emergency Operations Center locates resources through intra- and inter-state mutual aid agreements and federal assets.

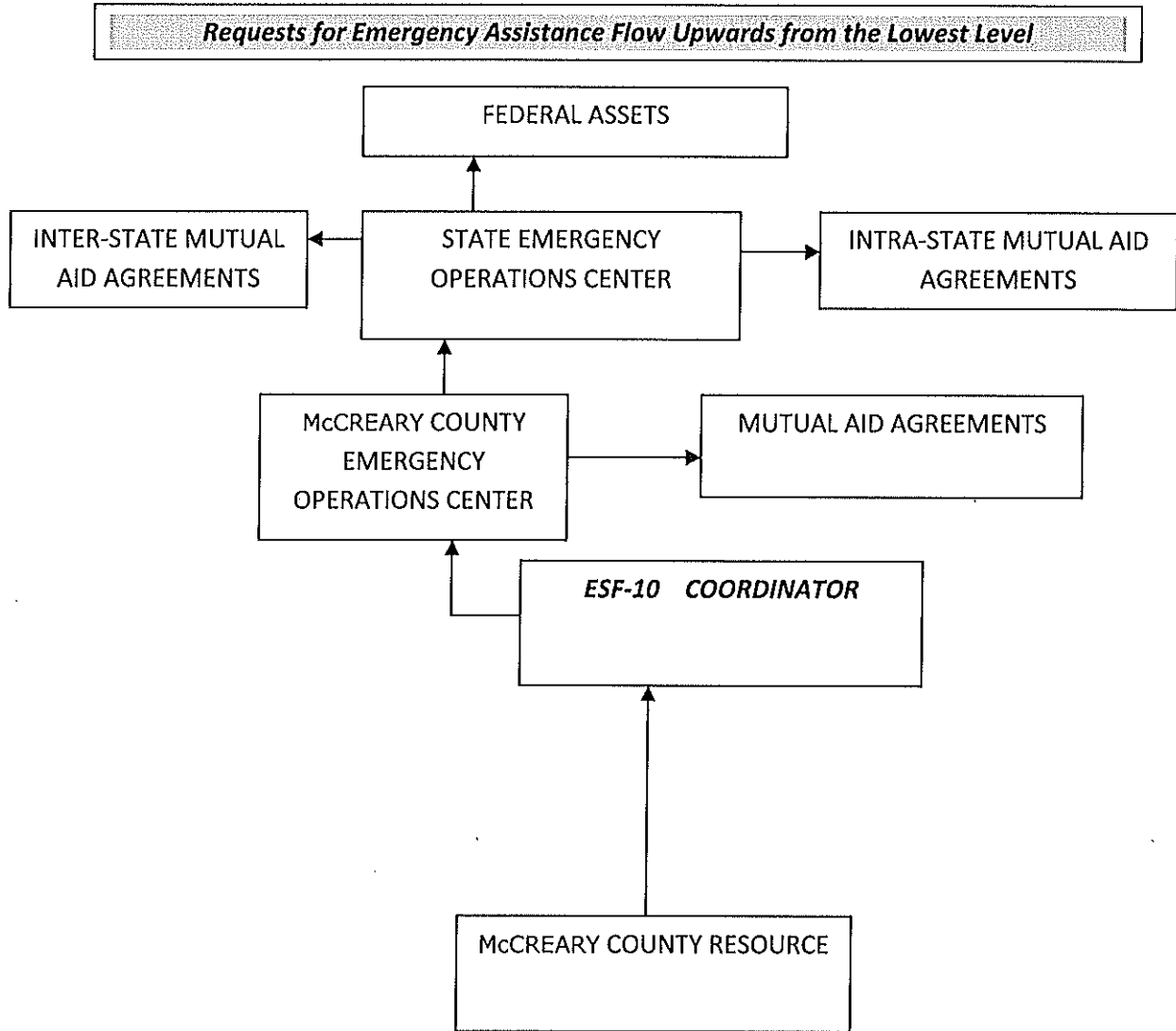


Figure 10-2: Progressive Requests for Emergency/Disaster Resources

County

McCreary County Emergency Management will initiate ESF-10/Hazardous Materials notification and will request assistance from the primary and support agencies to help staff the ESF-10 position in the McCreary County Emergency Operations Center.

In the Incident Command Structure, ESF-10/Hazardous Materials is located in the Operations Section as shown in Figure 10-3: *Incident Command System Structure: ESF-10/Hazardous Materials*.

McCREARY COUNTY EMERGENCY OPERATIONS PLAN

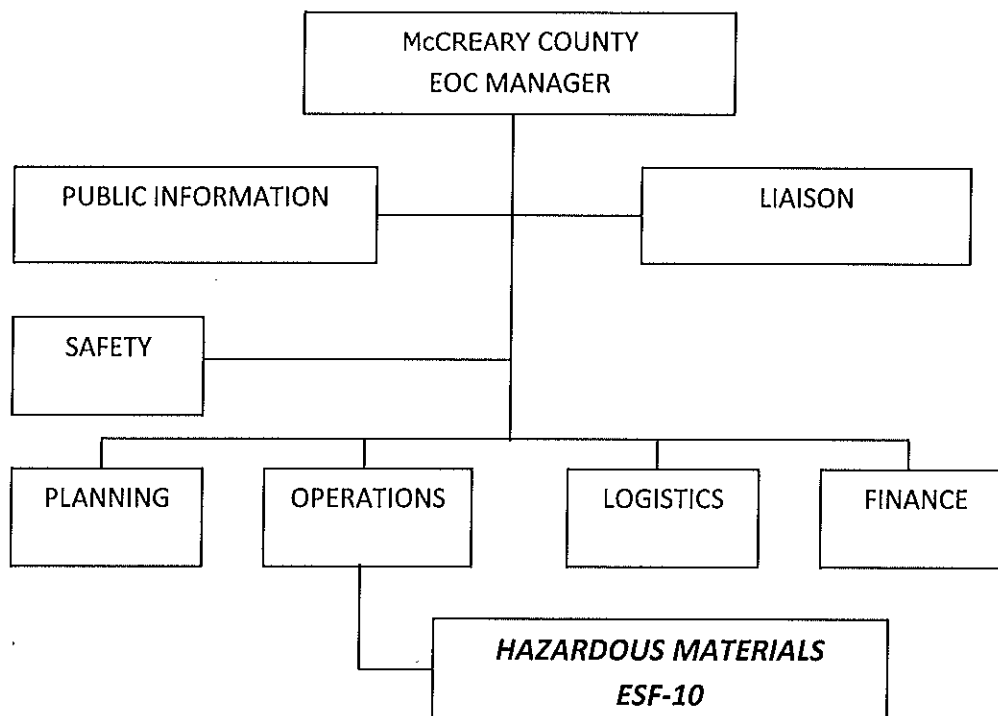


Figure – Incident Command System Structure: ESF-10/Hazardous Materials

During an activation of the EOC, support agency staff is integrated with the hazardous materials staff to provide support that will allow for an appropriate, coordinated and timely response.

Throughout the response and recovery periods, ESF-10/Hazardous Materials:

- Collects, analyzes, and disseminates tactical information on the nature, scope and potential impacts of an incident or major disaster related to hazardous materials;
- Evaluates and analyzes information regarding hazardous materials requests;
- Develops and updates assessments of current and anticipated future hazardous material needs and resource requirements,
- Implements contingency planning to meet anticipated hazardous materials demands or needs;
- Incorporates this analysis into Incident Action Plans; and
- Uses this intelligence to support the Logistics, Operations and other ESFs in their impact assessment and response missions.

Region

When local resources are overwhelmed or depleted, additional hazardous materials resources are obtained through established mutual aid agreements McCreary County has with counties in the region. The Operations Chief, in consultation with the requesting jurisdiction, contacts the agencies with whom mutual agreements are in effect to determine if the requested resources are available.

Additionally, either the KyEM Region 10 Response Manager or the state Emergency Operations Center can be contacted to determine the appropriate state agency serving as the lead agency for hazardous

materials coordination/support at the state level. That agency can designate a liaison to the McCreary County EOC to assist ESF-10/Hazardous Materials and to the extent capable provide coordinators, assessors and operational personnel in support of the EOC or field activities.

On activation of an emergency operations center in more than one county, the lead agency for hazardous materials coordination/support at the state level may support the coordination of the event response with regional resources or request additional resources through the State EOC.

State

During an emergency or disaster event, ESF-10/comparable primary and support agencies at the State Emergency Operations Center report and function under the overall direction of the Kentucky Division of Emergency Management Director.

During the response phase, ESF-10/Hazardous Materials evaluates and analyzes information regarding hazardous materials requests. ESF-10/Hazardous Materials also develops and updates assessments of the hazardous materials situation/status in the impact area and initiate contingency planning to meet anticipated demands and needs.

The Kentucky Division of Emergency Management develops and maintains the overall State Emergency Operations Plan and accompanying Appendices and Standard Operating Guidelines that govern response actions related to emergencies. Support agencies may develop and maintain their own similar documents for internal use, which must be compatible with and in support of the overall Emergency Operations Plan. All such documents will comply with the National Response Plan, the National Incident Management System and the Incident Command System.

Actions

Actions initiated by ESF-10 are grouped into the phases of emergency management: preparation, mitigation, response and recovery. Each phase requires specific skills and knowledge to accomplish and requires significant cooperation and collaboration between all supporting agencies and the intended recipients of service. ESF-10 encompasses a full range of activities from training to the provision of field services.

ESF-10/Hazardous Materials coordinates and may assume direct operational control of the following services:

- Assessment of hazardous materials needs and potential impacts
- Hazardous materials personnel
- Hazardous materials equipment and supplies
- Evacuation support and re-entry
- Emergency responder health and safety
- Radiological/chemical/biological hazards monitoring/mitigation
- Mental health and crisis counseling for responders
- Hazardous materials public information and risk communication
- Hazardous materials management, command and control of assets

- Hazardous materials activities related to terrorist threats and/or events
- Logistical Staging areas and Points of Dispensing
- Catastrophic incident and alternate hazardous materials facility support
- Information on drinking water, wastewater and solid waste facilities.
- Information on SARA Title III fixed facilities

Preparedness Actions

Actions and activities that develop ESF-10/Hazardous Materials response capabilities include planning, training, orientation sessions, and exercises for ESF-10 personnel and other ESFs that will respond with ESF-10. This involves the active participation of inter-agency preparedness organizations, which collaborate in such activities on a regular basis. Local and State hazardous materials teams will jointly address planning issues on an on-going basis to identify response zones, potential staging areas, and potential medical facilities and establish specialized teams.

Initiatives also include:

- Planning with ESF-10/Hazardous Materials support agencies and other emergency support functions to refine hazardous materials operations;
- Conducting training and exercise for the McCreary County EOC and hazardous materials response team members;
- preparing and maintaining emergency operating procedures, resource inventories, personnel rosters and resource mobilization information necessary for implementation of the responsibilities of the lead agency;
- Ensuring lead agency personnel are trained in their responsibilities and duties;
- Developing and presenting training courses for ESF-10/Hazardous Materials personnel, provide information on critical facilities to the County Emergency Management and develop protocols for frequently provided services;
- Maintaining liaison with support agencies;
- Conducting vulnerability analysis at critical facilities and making recommendations to improve the physical security;
- Conducting all exercises involving ESF-10/Hazardous Materials.

Response Actions

Response actions/initiatives include:

- Coordinating operations at the ESF-10/Hazardous Materials position in the McCreary County Emergency Operations Center (EOC) and/or at other locations as required;
- Coordinating needs and response actions with each fire district/department;
- Establishing and maintaining a system to support on-scene direction/control and coordination with McCreary County's EOC, State EOC, or other coordination entities as appropriate;

McCREARY COUNTY EMERGENCY OPERATIONS PLAN

- Establishing mutual aid procedures for hazardous materials response teams, interoperable communications and others as appropriate;
- Coordinating resource management and logistical support;
- Implementing Disaster Assessment Teams to determine-
 - Post-event effect on emergency services;
 - Functional group resources, and;
 - The ability to perform Continuity of Operations for essential functions;
- Monitoring the environmental impact of hazardous materials incidents in regards to the safety of responders as well as the public;
- Coordinating environmental impact data with ESF-5/Emergency Management and ESF-8/Public Health and Medical Services and others as appropriate;
- Monitoring and directing hazardous materials resources and response activities to include pre-positioning for response/relocation due to the potential impact(s) of the emergency situation;
- Participating in EOC briefings, development of incident action plans and situation reports, and meetings;
- Coordinating with support agencies, as needed, to support emergency activities;
- Obtaining other resources through the Statewide Emergency Management Mutual Aid and Assistance Agreements;
- Coordinating all resources into the affected areas from designated staging areas;
- Coordinating with other jurisdictions' ESFs or like function to obtain resources and facilitate an effective emergency response among all participating agencies.

Recovery Actions

Recovery actions/initiatives include:

- Contacting each fire department for initial damage assessment of personnel, equipment and supplies;
- Maintaining documentation of all reported damage by fire district;
- Maintaining documentation related to environmental damage from hazardous material releases;
- Coordinating ongoing environmental assessment(s) with Kentucky Environmental Protection Cabinet.

Mitigation Actions

Mitigation actions/initiatives include:

- Identifying deficiencies or areas to be improved and seek funds to enhance protective measures to lessen the impact on vulnerable populations and/or minimize damage to critical facilities;
- Providing personnel with the appropriate expertise to participate in activities designed to reduce or minimize the impact of future disasters.

Responsibilities

All tasked agencies will:

- Develop applicable standard operating procedures, guidelines and/or checklists which clearly define the role of this emergency support function in the overall functioning of the McCreary County EOC and detail the accomplishment of their assigned functions;
- Train staff in the standard operating procedures, guidelines and/or checklists that outline the courses of action to be taken during a pending or actual disaster or emergency situation;
- Participate in drills to exercise these procedures and actions on a regular basis;
- Participate in honest appraisals of the performance of the Hazardous Materials role and actions after each drill, exercise and actual activation of the McCreary County EOC;
- Participate in a continuous quality improvement process that uses the findings of the performance appraisals and the lessons learned to continuously refine the role and actions of this emergency support function in the overall functioning of the McCreary County EOC and incorporate these into clearly written procedures which are shared with all staff and involved agencies;
- Deploy a representative to the EOC to assist with emergency management activities;
- Provide on-going status reports as requested by the Emergency Management Coordinator;
- Document all costs and expenses associated with response and recovery activities taking care to clearly separate disaster-related work from daily work in the event that State and Federal reimbursement becomes available;
- Maintain up-to-date rosters for notifying personnel and 24-hour EOC staffing capabilities, and provide this information to the McCreary County Emergency Management Agency;
- Perform other emergency responsibilities as assigned.

Primary Agencies: Pulaski County SRT/KY HazMat 12
McCreary County Emergency Management

Duties include:

- Providing leadership in directing, coordinating and integrating overall McCreary County efforts to provide hazardous materials assistance to affected areas and populations;
- Staffing and operating a National Incident Management System compliant, command and control structure (i.e., Incident Command System), to assure that services and staff are provided to areas of need;
- Coordinating and directing the activation and deployment of fire agencies' personnel, supplies and equipment and provide certain direct resources;
- Evaluating the emergency, make strategic decisions, identify resource needs and secure resources required for field operations;
- Tasking support agencies as necessary to accomplish ESF-10/Hazardous Materials support responsibilities;
- Monitoring hazardous materials emergency response and recovery operations;
- Coordinating all state and federal hazardous materials resources into the affected areas from Staging Areas;
- Managing hazardous materials and other emergency incidents in accordance with each department's Standard Operating Guidelines and under the direction of ESF-10/Hazardous Materials representatives or designee;
- Making specific requests for hazardous materials assistance to the State ESF-10/comparable as needed. The State will activate resources through the State Emergency Response Plan;
- Re-assessing priorities and strategies throughout the emergency according to the most critical fire service needs;
- Assisting with emergency evacuations and re-entry of threatened areas;
- Demobilizing resources and deactivate the ESF-10/Hazardous Materials function upon direction from the EOC Manager.

Support Agencies:

Support agencies will provide assistance to the Emergency Support Function with:

- Performing the above-outlined tasks as requested by the ESF Coordinator;
- Services, staff, equipment, and supplies that complement the entire emergency response effort
- Reporting current resources capabilities on a regular basis.

Administration and Support

Support

Requests for emergency assistance will be resolved at the lowest level direction and control facility with appropriate response resources capabilities. Unresolved assistance requests will normally flow upward from cities to the county and/or field deployed command posts to responsible representatives in the State EOC, and as required to other states or the federal government for assistance support.

Agreements and Understandings

All agreements and understandings entered into for the purchase, lease, or otherwise use of equipment and services, will be in accordance with the provision of laws and procedures.

Status Reports

The primary agency will maintain status of all outstanding assistance requests and unresolved ESF-10/Hazardous Materials related issues. This information will be summarized into periodic status reports and submitted in accordance with applicable operating procedures.

Expenditures and Recordkeeping

Each ESF-10/Hazardous Materials agency is responsible for establishing administrative controls necessary to manage the expenditure of funds and to provide reasonable accountability and justification for federal reimbursement in accordance with the established guidelines. The first source of funds for expenditures by agencies in response to emergency, imminent disaster, or recovery from a catastrophic incident, is to be from funds associated with each local agency.

ESF-10/Hazardous Materials is responsible for managing financial matters specific to ESF-10 activity and related to resources procured/used during an event and forwarding that information to the Finance/Administration Section. However, each local government/agency/department must also track and record its own expenditures to ensure accuracy with any submissions for potential reimbursement. Information will be provided post-event as to application procedures for reimbursement.

The Finance/Administration Section will coordinate with the Logistics Section to ensure that procurements and staff hours are properly documented and processed for potential reimbursement. It will also be responsible for follow-up on all financial issues through coordination with McCreary County Government and other local governments' fiscal and personnel management officials, Kentucky Division of Emergency Management fiscal agents, Federal Emergency Management Agency fiscal agents and directly with vendors as necessary.

Expenditures by other departments for activity not directly related to ESF-10/Hazardous Materials will be documented by those entities and submitted directly to the Finance/Administration Section as soon as possible.

After Action

Following the conclusion of any significant emergency, incident or exercise, the primary agency representative will facilitate a critique of the group activities during the emergency/incident/exercise with the ESF-10/Hazardous Materials agencies, identifying the successes and identifying areas that can be strengthened and enhanced for efficiency in a continuous quality improvement process for the overall performance of the McCreary County Emergency Operations Center.

**Statement of Concurrence
HAZARDOUS MATERIALS
ESF-10**

The signature appearing below indicates the individual has the authority to commit resources of the agency represented and agrees to the functions and tasks prescribed for this ESF.

PRIMARY AGENCIES: Pulaski County SRT/KY HazMat 12
McCreary County Emergency Management

Rudy T. Young _____ Rudy T. Young _____ 11-19-2012
(Signature) (Printed Name) (Date)

[Signature] _____ C. D. BAKER _____ 11/27/12
(Signature) (Printed Name) (Date)